

JTimeTracker

Release 0.3.10 Manual

Rolf F. Katzenberger

JTimeTracker: Release 0.3.10 Manual

Rolf F. Katzenberger

Portuguese localization, in 2003 : Daniel Ambrosio

Corrections for initial Turkish localization, extension of Turkish localization in 2003 : Tamer Berk

Initial version of Turkish localization, in 2003 : Ümit Dogan

Extensive beta testing and lots of useful comments for releases 0.2.x : Christoph Kluge

Hungarian (incomplete) localization and Serbian localization, in 2003 : Olivera Vukovi#-Katzenberger

Copyright © 2002-2004 Rolf F. Katzenberger

The copyright holders make no representation about the suitability of this documentation for any purpose. It is provided “as is” without expressed or implied warranty. If you modify this documentation in any way, identify your modified version as a variant of this document.

Permission to use, copy, modify and distribute this documentation for any purpose and without fee is hereby granted in perpetuity, provided that all legal notices and copyright notices appear in all copies.

This software is OSI Certified Open Source Software. OSI Certified is a certification mark of the Open Source Initiative.

More information about the OSI is available under <http://opensource.org> [<http://opensource.org>]

Table of Contents

1. Introduction	1
1.1. Overview	1
1.1.1. How It Works	1
1.2. Installation and Deinstallation	2
1.2.1. Prerequisites	2
1.2.2. Installation	2
1.2.3. Deinstallation	3
1.3. Release Notes And Change History	4
1.3.1. Release 0.3.10	4
1.3.2. Release 0.3.9	5
1.3.3. Release 0.3.7	5
1.3.4. Release 0.3.5	6
1.3.5. Release 0.3.1	7
1.3.6. Release 0.3.0	8
1.3.7. Release 0.2.5	9
1.3.8. Release 0.2.3	9
1.3.9. Release 0.1.20	10
2. Usage	11
2.1. Quickstart	11
2.2. Panels	11
2.2.1. Templates Panel	11
2.2.2. Logbook Panel	13
2.2.3. Evaluation Panel	14
2.2.4. Template Editor Panel	14
2.2.5. Options Panel	16
A. License	18
B. Third-Party Components	19
B.1. Components	19
B.1.1. WerXBus-RC2	19
B.1.2. Log4J, Release 1.2.8	19
B.1.3. dom4j, Release 1.4	19
B.1.4. POI, Release 1.5.1 Final	19
B.1.5. JFreeChart, Release 0.9.8, including JCommon, Release 0.8.0	19
B.1.6. Janel, Release 1.0.2	19
B.1.7. clockface.inc	20
B.1.8. Kunststoff Look & Feel, Release 2.0.1	20
B.1.9. Metouia Look & Feel, Release 1.0 beta	20
B.1.10. SkinLF Look & Feel, Release 1.2.3	20
B.1.11. GlyphsPro collection of high colour 16x16 and 24x24 toolbar glyphs	20
B.1.12. DocBook DTD, Release 4.1.2	20
B.1.13. Development-Only Third-Party Components	20
B.2. Third-Party Licenses	21
B.2.1. The Apache Software License, Version 1.1	21
B.2.2. dom4j BSD style license	22
B.2.3. GNU Lesser General Public Licence (LGPL), Version 2.1	23
B.2.4. Janel MIT-style license	31
B.2.5. SkinLF license	31
B.2.6. DocBook license	33
B.2.7. GlyphsPro license	33
B.2.8. Mozilla Public License (MPL), Version 1.0	34
B.2.9. AElfired license	40
B.2.10. Common Public License (CPL), Version 1.0	40
Index	45

List of Figures

2.1. The Templates Panel	12
2.2. The Logbook Panel	13
2.3. The Evaluation Panel	14
2.4. The Template Editor Panel	15
2.5. The Options Panel	16

List of Examples

1.1. Sample Logbook Entry Content	1
1.2. Sample Template Content	2

Chapter 1. Introduction

A little inaccuracy sometimes saves tons of explanation.
-- Saki (Hector Hugh Munro, 1870 - 1916)

This chapter provides you with a general understanding of the concepts that JTimeTracker is based on.

1.1. Overview

JTimeTracker (<http://sourceforge.net/projects/jtimetracker>) is an application that

- tracks the time you spent on various projects and tasks (or whatever work item hierarchy you prefer instead, “project” and “task” are just examples);
- helps you evaluate the tracked efforts (by summarizing, filtering, exporting to Microsoft Excel™, etc.)

Opposed to other tools, JTimeTracker does not work like a “stopwatch” to measure the time spent on various activities. Instead, JTimeTracker pops up in regular intervals and asks you what you are currently doing and for how long you did it (default: since it last asked you). In my opinion, this approach requires less overhead and is less error-prone than starting and stopping a stopwatch for every task switch during the day.

Some of the features of JTimeTracker

- Tracks an arbitrary/editable set of properties per logbook entry.
- Can export the whole logbook to a Microsoft Excel™ file.
- Can summarize logbook entries per day, month, year or template (e.g., project) and export the results to Microsoft Excel™
- Can create bar charts from summaries, print the charts and export them to a *.png file

Hosting

JTimeTracker is hosted by Sourceforge [<http://sourceforge.net>]. Thank you!

1.1.1. How It Works

JTimeTracker maintains a logbook in which each entry represents something you have done for a few minutes.

Basic concepts

Logbook entry

A combination of a timepoint and several attributes of various types and values, saved every time you decide to create such an entry.

Example 1.1. Sample Logbook Entry Content

A simple logbook entry contains information like “Worked on MyPro-

jectNumber2 for 15 minutes at July 15th, 2002, around 10:00 a.m.”. Usually, a logbook entry contains more detail settings than just project, date and duration.

Template

The description of a single kind of logbook entries. The template describes which data a logbook entry can contain. JTimeTracker enforces the use of templates, it is impossible to create logbook entries that do not conform to a template. You can create as many templates as you wish.

Example 1.2. Sample Template Content

Project names are good candidates for logbook entry template names. Usually, projects are subdivided into tasks or milestones, so tasks or milestones make good settings inside a log entry for a project. Another setting inside a project template might be e.g. a workflow, having possible values like “meeting”, “planning”, “test”, etc.

Periodically, JTimeTracker asks you to specify data for a logbook entry that tracks your activities since you were last asked. You probably don't want to type in too much additional information per entry, especially if the same information is repeated for several entries in a row, during the day. This is why entries are created from templates, so that you only need to modify the data that should not be set to default values.

JTimeTracker remembers the last values you specified, for your convenience. You can also reuse any old logbook entry values to fill in a template (see Copying Entry Values [14]).

1.2. Installation and Deinstallation

1.2.1. Prerequisites

To be able to install JTimeTracker on your computer, you must have installed one of the following:

- *either* Java 2 Runtime Environment, SE, Version 1.4.0 (or higher)
- *or* Java 2 Platform, Standard Edition Software Development Kit (JDK), Version 1.4.0 or higher.

You can download one of these from <http://java.sun.com/j2se/1.4/download.html> [<http://java.sun.com/j2se/1.4/download.html>].

1.2.2. Installation

After downloading of the JTimeTracker installer, take the following steps.

Read Deinstallation Notes

Before installing a newer release of JTimeTracker over an older one, make sure you've read the deinstallation instructions (see Section 1.2.3, “Deinstallation” [3]) - otherwise, you might lose old data.

Procedure 1.1. Using the *.exe installer for Microsoft Windows™ systems

1. Execute the installer by double-clicking on it and follow the instructions.
2. Depending on the options you choose, the installer creates shortcuts to start the application.

Procedure 1.2. Using the generic *.tar.gz or *.zip archives

1. Uncompress the archive into a directory of your choice. We'll call this *installdir*.
2. Make sure the **javaw** is available on the PATH of your system: You should be able to execute **javaw** on the command line without receiving an error message.
3. Depending on your operating system, you should now be able to execute *installdir\run.bat* or *installdir/run.sh*. In the case of *run.sh*, you might have to modify this file to suit your computer.

1.2.3. Deinstallation

During Deinstallation, you will probably want to preserve your old logfiles and configuration files that were created in *installdir*.

On Microsoft Windows™ systems, if you have used the *.exe installer, the deinstallation feature does not remove these files. You should move (*not just copy*) the complete directories *installdir\config* and *installdir\logs* directories to a safe place for later reuse. *After this*, delete *installdir* manually.

On non-Microsoft Windows™ systems, you should move (*not just copy*) the complete directories *installdir\config* and *installdir\logs* directories to a safe place for later reuse. *After this*, delete *installdir* manually.

Reusing old configuration and log files

Release 0.3.9 does not support reusing configuration and log files from older releases.

You can no longer copy the old contents of the *installdir\logs* into the same subdirectory of a fresh, new installation. Release 0.3.9 will not recognize old-style contents of the *\logs\timerlog.xml* file, it will not be able to produce statistics or export log entries at all.

With respect to *installdir\config\configuration.xml* things are a bit different. You should compare the new structure to your configuration file from an older release. The biggest change in release 0.3.9 is that the values of settings are not stored any longer as value attributes but inside value tags.

In any case, you must replace the old contents inside the *basic* and *ui* tags by the contents of the same tag in the new configuration file. You will lose some of your preference settings, but since there are not so many of them, you can start JTimeTracker and edit the values on the Op-

tions panel (see Section 2.2.5, “Options Panel” [16]).

Finally, you can copy the templates you created in the past, from the old configuration file into the new one. Pay attention whether all data types of the old `items` are still supported.

1.3. Release Notes And Change History

I'd be happy to find feature requests (to submit one, go here: http://sourceforge.net/tracker/?func=add&group_id=57032&atid=482708 [http://sourceforge.net/tracker/?func=add&group_id=57032&atid=482708])

1.3.1. Release 0.3.10

Bugfixing release, no other changes, no features added.

Note

This release is downward compatible with Release 0.3.9 *only*, but not with earlier releases (see Reusing old configuration and log files [3]).

Users of Microsoft Windows™ should uninstall the prior Release 0.3.9 (all settings and data will be preserved). Afterwards, release 0.3.10 can be safely installed into the old installation directory.

Users of other operating systems should backup their existing `config` and `logs` subdirectories that are found in their Release 0.3.9 installation directory. Afterwards, copy the new Release 0.3.10 to an installation directory of your choice and overwrite the `config` and `logs` inside with the backed up versions.

New Features

Pending Feature Requests

- | | |
|--------------------------------------|---|
| [706758] Template Tutorial in Manual | A tutorial (including screenshots) to demonstrate how to use JTimeTracker properly: define and use templates, evaluate results. |
| [764417] Editable Logs | The log should be editable to assist in recording entries. Suggested implementation by the requester: to be able to edit begin time, end time, and duration of entries. |

Changes

Fixed Bugs

- | | |
|---|--|
| [1020476] Enumeration type on template editor panel | Changing the type of items on the template editor panel failed. |
| Errors while copying from logbook to templates | Copying from logbook to template failed under certain circumstances. |

1.3.2. Release 0.3.9

Polishing release. This is the last release before the 0.4 rewrite. I've decided not to include the pending features (see below), since they'll be much easier to implement after a partial rewrite. Release 0.3.9 will be branched and I'll fix all reported bugs; however, new features and a tutorial will only be added to the upcoming release 0.4.

The main change in release 0.4 will be support for templates consisting of templates. This will help users in designing reusable template components rather than having to copy from a generic template where changes to that generic template are not propagated to the copies, as things are handled now.

New Features

[839431] Launch without additional command line window
No more additional command line window that is present in the Microsoft Windows™ task bar after launching the application.

Pending Feature Requests

[706758] Template Tutorial in Manual
A tutorial (including screenshots) to demonstrate how to use JTimeTracker properly: define and use templates, evaluate results.

[764417] Editable Logs
The log should be editable to assist in recording entries. Suggested implementation by the requester: to be able to edit begin time, end time, and duration of entries.

Changes

(internal) Setting values now enclosed in tags
Values of settings are now stored inside of tags instead of attributes. This breaks the backward compatibility (see Reusing old configuration and log files [3]), you will have more manual work if you upgrade to 0.3.9 from earlier releases.

(internal) Upgrade to dom4j 1.5 beta 1
Upgrade to dom4j 1.5 beta 1 to fix dom4j 1.4 base URI resolution bug (see Section B.1.3, “dom4j, Release 1.4” [19]).

(internal) Changed internal bus
Replaced Observable-based internal bus by WerXBus-RC2. (see Section B.1.1, “WerXBus-RC2” [19]).

Fixed Bugs

[803681] HTML manual menu item does not work
After the switch to JavaHelp, there is no more HTML version of the help. The installer for Microsoft Windows™ was still creating an erroneous link in the JTimeTracker Program group.

1.3.3. Release 0.3.7

Added a new help system based on JavaHelp.

New Features

New help system	Added a new help system based on JavaHelp™. This gives users a way to browse and search (full-text) the online help.
French Localization	A french localization has been added. The locale to be used can be selected on the Options panel (see Section 2.2.5, “Options Panel” [16]).
[752290] Retain Window Size	The position and the size of the main window are now saved and restored. Values are stored as percentages, so that changing the screen resolution doesn't place the window out of screen borders.

Pending Feature Requests

[706758] Template Tutorial in Manual	A tutorial (including screenshots) to demonstrate how to use JTImeTracker properly: define and use templates, evaluate results.
--------------------------------------	---

Changes

(internal) Switched to JFreeChart, Release 0.9.8, and JCommon, Release 0.8.0	Switched to Release 0.9.8 of JFreeChart, which includes JCommon, Release 0.8.0 (see Section B.1.5, “JFreeChart, Release 0.9.8, including JCommon, Release 0.8.0” [19]).
(internal) Switched to Log4J, Release 1.2.8	Switched to release 1.2.8 of Log4J. (see Section B.1.2, “Log4J, Release 1.2.8” [19]).
(internal) Switched to Saxon, Release 6.5.2	Had to switch to Saxon 6.5.2, since release 7.3.1 does not support chunking of DocBook XML files, which is necessary for creating JavaHelp.

1.3.4. Release 0.3.5

Bugfixes and internal changes and cleanup, not more functionality compared to the predecessor. There have been considerable Look & Feel improvements as well as i18n add-ons.

New Features

New Look & Feel Options	Integrated Metouia (see Section B.1.9, “Metouia Look & Feel, Release 1.0 beta” [20]) and SkinLF (see Section B.1.10, “SkinLF Look & Feel, Release 1.2.3” [20]) Look & Feel options. SkinLF supports themepacks (aka skins), which can be selected in a separate setting.
Localizations	Localizations have been added for Hungarian (hu, still incomplete), Portuguese (pt), Serbian (sr) and Turkish (tr). The locale to be used can be selected on the Options panel (see Section 2.2.5, “Options Panel” [?]).

Pending Feature Requests

[706758] Template Tutorial in Manual A tutorial (including screenshots) to demonstrate how to use JTimeTracker properly: define and use templates, evaluate results.

Fixed Bugs

[673125] Identical Template Names Lockup It is now impossible to rename a template in case another template already exists under the same name. Copies of a template have a timestamp in their name, so that right from the start the name is unique.

Changes

Future Releases: .gz Archives Replaced by .bz2 Future Releases will contain .bz2 archives instead of .gz archives, because the compression ratio is considerably better, saving me upload time and saving you download time.

(internal) Switched to Log4J, Release 1.2.7 Switched to a release 1.2.7 of Log4J. (see Section B.1.2, “Log4J, Release 1.2.8” [19]).

(internal) Switched to Saxon, Release 7.3.1 Had to switch to Saxon for XSLT processing, since Xalan as included in JDK 1.4 is too buggy and crashes during rendering of the Docbook sources.

To avoid online DTD lookup, the documentation is copied to a temporary file and the DOCTYPE inside is rewritten to point to a local file. As soon as Ant supports xmlcatalog also for Saxon, this workaround will be removed. I do not plan (DTTSTTCPB) to configure and use Sun's packages that were made for the purpose of local catalogs for arbitrary parsers.

1.3.5. Release 0.3.1

Bugfixes, but not much more functionality compared to the predecessor

New Features

Immediate Look & Feel change Changing the Look & Feel setting is now immediately reflected in the GUI.

Pending Feature Requests

No pending feature requests There are no pending feature requests.

Fixed Bugs

Setting rename	Changing the name of a setting in the Template Editor panel had no lasting effect, the change was not saved.
Template Name in Logbook Export to Excel	The name of the template was not exported.

Pending Bugs

No pending bugs	There are no pending bugs.
-----------------	----------------------------

1.3.6. Release 0.3.0

A reworked alpha release that finally provides a visual template editor. This release is the first alpha release.

Automated Upgrade

Release 0.4 will provide an upgrade feature for existing configurations.

New Features

[588598] Visual template editor	A visual editor for templates (add/change/remove templates and template items)
---------------------------------	--

Pending Feature Requests

No pending feature requests	There are no pending feature requests.
-----------------------------	--

Fixed Bugs

Multithreading Bugs	Numerous multithreading bugs were eliminated; internal notification handling was changed from ActionListener style to Observer/Observable style to facilitate thread safety.
Timing Bug	A timing bug resulted in incorrect logging of work periods. The Last log option was erroneously set to the time when the physical logging occurred.

Pending Bugs

No pending bugs	There are no pending bugs.
-----------------	----------------------------

1.3.7. Release 0.2.5

New Features

[587982] Logbook (delete or copy entries)	Logbook entries can now be deleted in the Logbook panel (see Section 2.2.2, “Logbook Panel” [13]). The contents of a panel can now be copied to the template it was created from, thus allowing the user to re-use data from the most recent logbook entries.
---	---

Pending Feature Requests

[588598] Visual template editor	A visual editor for templates (add/change/remove templates and template items)
---------------------------------	--

Fixed Bugs

[589535] Excel export of bar chart: deadlock	On the Evaluation panel (see Section 2.2.3, “Evaluation Panel” [14]), clicking the Export button no longer causes a deadlock inside the application.
--	--

[590083] DocBook DTD license missing	The DocBook DTD license was missing in the documentation, although the DTD was included in the full release.
--------------------------------------	--

Pending Bugs

No pending bugs	There are no pending bugs.
-----------------	----------------------------

1.3.8. Release 0.2.3

A pre-alpha release that is fully functional. This release comes close to the content of the upcoming alpha release.

No Automated Upgrade

There is no upgrade feature yet, so please do not use this release yet to track important data.

New Features

[585758] Logbook for last x entries	Displays a configurable number of most recent Logbook entries (see Section 2.2.2, “Logbook Panel” [13]).
-------------------------------------	--

Pending Feature Requests

No pending feature requests There are no pending feature requests.

Pending Bugs

No pending bugs There are no pending bugs.

1.3.9. Release 0.1.20

A pre-alpha release that is functional. Documentation (manual & javadocs) is a bare minimum. This release is meant for testing the release process and for giving interested users something to play with.

No Automated Upgrade

There is no upgrade feature yet, so please do not use this release yet to track important data.

Pending Feature Requests

No pending feature requests There are no pending feature requests.

Pending Bugs

No pending bugs There are no pending bugs.

Chapter 2. Usage

This chapter provides you with easy to follow procedures how to get the best out of JTimeTracker.

2.1. Quickstart

If you can't wait to use it, this section is for you.

Procedure 2.1. JTimeTracker For The Impatient

1. Start JTimeTracker using the `run.bat` or `run.sh` script, respectively. Under Microsoft Windows, you can also use the shortcuts created by the installer or double-click the JTimeTracker jar file, provided you have not associated the extension `*.jar` with file compression utilities.
2. Go to the Templates Editor panel. Adapt the `template` elements to your needs, but observe the following rules:
 - You cannot remove or rename the template called “default”.
 - From templates, you cannot remove or rename the settings that are named “Duration” or “Autolog”.
3. Switch to the Options panel. For the popup interval, enter a value that suits your needs. For many purposes, 15 minutes is a reasonable choice: every 15 minutes, you will be asked what you've been doing.
4. Switch to the Templates panel and have a look at the Autolog setting for each template. If you want a log entry created from a template even during your absence, activate the Autolog switch of the template.

A good choice for many purposes is to deactivate Autolog for all templates except “default”: as a result, the “default” template will be used in your absence, when you are not able to create a log entry manually.

Another choice is to activate Autolog for all templates that describe phone calls, meetings or other occasions when it is not possible to press keys on your computer keyboard.

5. Whenever JTimeTracker pops up, on the Templates panel, select a template for the entry to be created. Modify the settings that have inappropriate default values and press the “Log this” button or use the log button shortcut.
6. When you want to see or make evaluations of the entries, try all options of the Tools menu or export the entries on the evaluation panel. The timespan for which entries are exported can be specified on the Options panel.

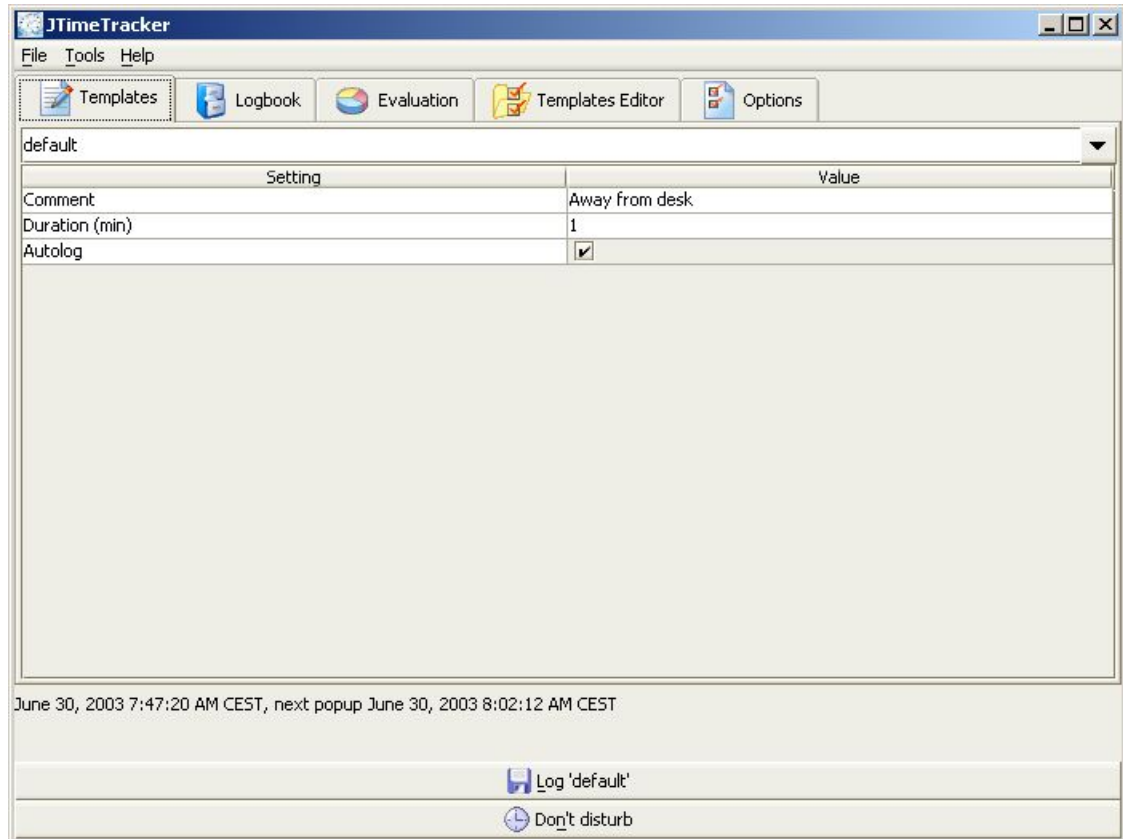
2.2. Panels

The user interface of JTimeTracker is mostly provided by tabbed panels, for easy and fast access.

2.2.1. Templates Panel

On the Templates panel, you can review and rename existing templates as well as enter values for all settings inside a template.

Figure 2.1. The Templates Panel



Note

The “default” template cannot be renamed.

Reuse Old Log Entries

You can fill template values from the content of old logbook entries. See the tip about Copying Entry Values [14] below.

All templates have two settings in common that cannot be removed:

Mandatory Template Settings

Duration (min)	The time that you spent on the work associated with this template, measured since the last log entry was created.
Autolog	If set, then JTimeTracker will create a log entry from the contents of this template without your confirmation. This is suitable e.g. for a template that shall be logged when you are away from your desk or too

busy to press any button.

If *not* set, then JTimeTracker will check the Autolog setting of the “default” template to find out whether that should be logged. If this setting is disabled, too, then no entry will be created.

Tip

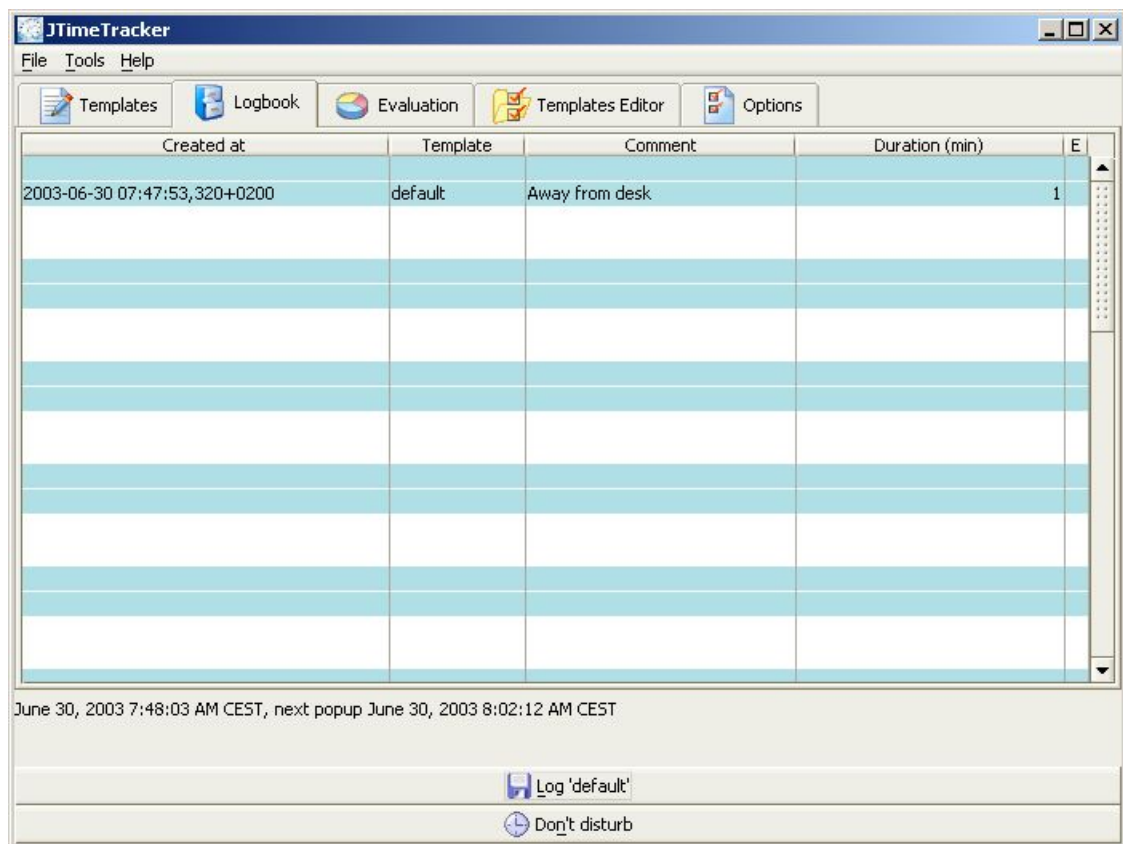
It is recommendable to reserve the “default” template for purposes like “away from desk”. This way, you can e.g. track how often you are kept from working during the day.

To rename a template, just change the template name in the template combo box. As soon as the caret leaves the combo box, the template will be renamed. Another way to rename a template is to change the name in the template tree of the template editor panel (see Section 2.2.4, “Template Editor Panel” [14]).

2.2.2. Logbook Panel

The Logbook panel lists the most recent log book entries. You can configure the number of entries to display as well as the number of columns to display on the Options panel.

Figure 2.2. The Logbook Panel



Since logbook entries are created from templates, the numbers as well as the names and types of columns per entry may differ. In case a column contains uniform data, the column title will reflect this.

Otherwise, the column title just consists of a numbered field label and the diverse cell value names will be displayed directly above each cell value.

To delete an entry, select it, then right-click and choose the Delete selected entry menu item.

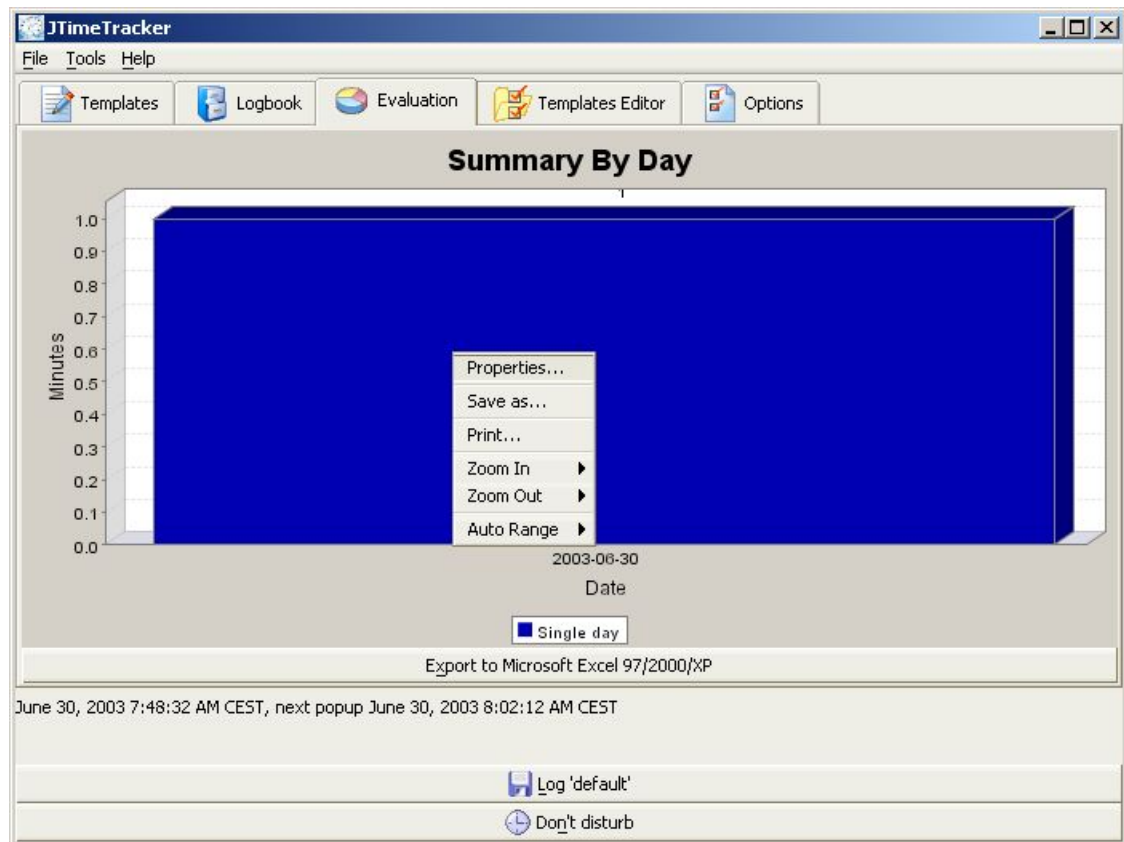
Copying Entry Values

You can create a new logbook entry from an old one. To do so, select the old entry in the Logbook panel, right-click and choose the Copy values to template menu item. In case the original template still exists, JTimeTracker will then copy all values from the logbook entry as current values into the template. If the template has changed, only the matching settings are copied.

2.2.3. Evaluation Panel

The evaluation panel shows bar charts that are created from summarized data. To trigger the creation of a bar chart, just select any of the Summarize items from the Tools menu.

Figure 2.3. The Evaluation Panel



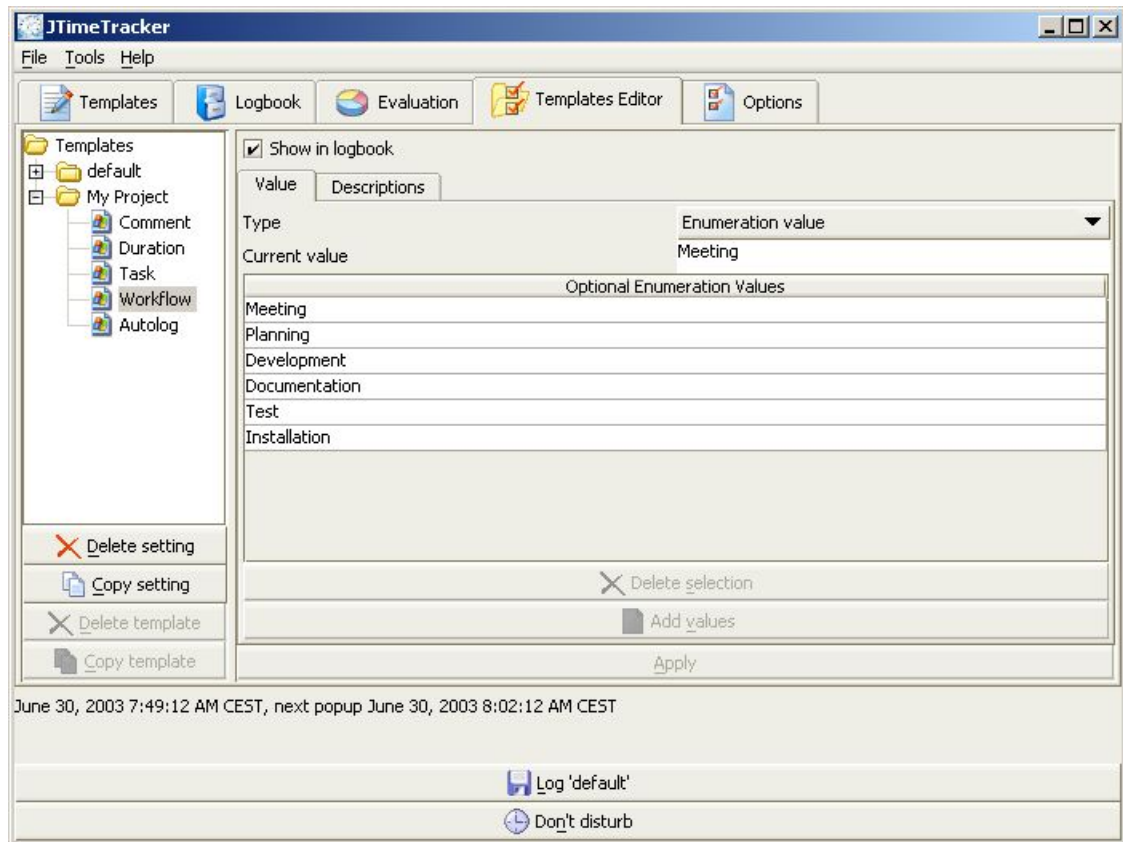
After a summary has been created, the data that is displayed can be exported to a Microsoft Excel™ file.

2.2.4. Template Editor Panel

The template editor panel serves to manipulate all templates that you can see on the templates panel (see Section 2.2.1, “Templates Panel” [11]). You can rename, copy (clone) and delete templates as well as

every setting inside a template.

Figure 2.4. The Template Editor Panel



The template Editor consists of two views:

- on the left, you can see the template tree, showing a labeled folder symbol for each template and a labeled paper sheet symbol for each setting. Below the tree, you can find buttons for deleting and for copying templates and settings.
- on the right, you can see the settings editor; as soon as you select a setting's node in the template tree, the settings editor displays the setting's type, current value, optional values (for enumeration types) and the table for localized descriptions of the setting. At the top of the editor, you can select whether this setting shall be logged into the logbook.

As soon as you change anything, the button Apply becomes available. Press it to save your changes. In case you select a different node in the template tree while your changes are not yet saved, you will be asked whether you want to save your changes.

Note

There is one exception to this rule: template renaming is executed immediately. To undo this, you have to rename the template node manually.

2.2.4.1. Modifying the Template Tree

To modify the template tree, you have several options.

2.2.4.1.1. Renaming Templates and Settings

To rename a template or a setting inside a template, click twice on the corresponding node in the template tree to open the editing mode for the node label. To rename a template, you can also change the name in the template name combobox on the template panel (see Section 2.2.1, “Templates Panel” [11]).

Template renaming is executed immediately, whereas the renaming of a setting requires you to press the button Apply.

2.2.4.1.2. Deleting Templates and Settings

To delete a template or a setting inside a template, select the corresponding node in the template tree. Selecting a node sets the respective Delete *setting* button available. After you press the button, you will be asked to confirm the deletion.

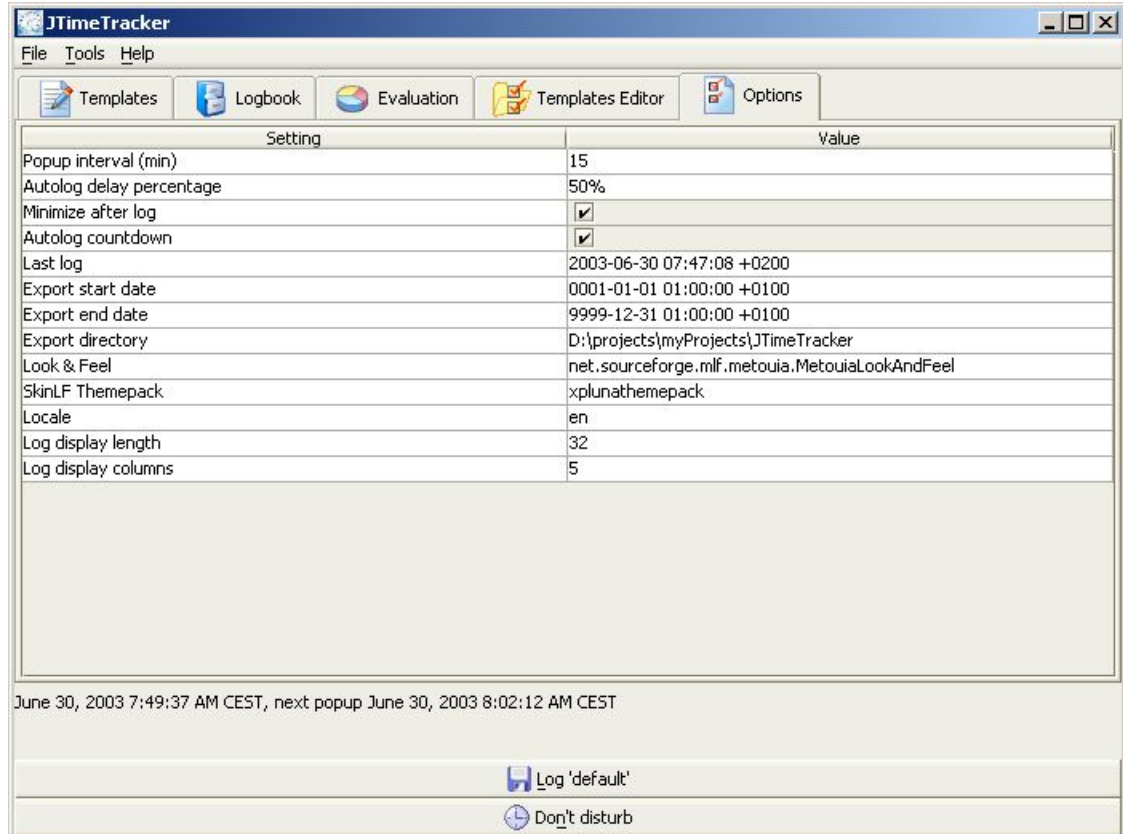
2.2.4.1.3. Copying Templates and Settings

To copy a template or a setting inside a template, select the corresponding node in the template tree. Selecting a node sets the respective Copy *setting* button available. After you press the button, a new node labeled Copy of *old setting name* will be inserted into the tree.

2.2.5. Options Panel

The Options panel is the central place to configure the overall behavior of JTimeTracker.

Figure 2.5. The Options Panel



Option Panel Settings

Popup interval (min)	The time period after which JTimeTracker asks you to manually log an entry.
Autolog delay percentage	The time that JTimeTracker waits before it assumes that you will not log an entry manually (e.g., because you are away from your desk). This time is measured in percent of the Popup interval (min) [] setting. Usually, 50% is a good choice.
Minimize after log	If set, JTimeTracker minimizes itself to icon state after an entry has been logged.
Autolog countdown	If set, JTimeTracker displays a countdown of the seconds until an automatic logging will be triggered.
Last log	The date and time for which the last log entry was computed. This means the end of the last measured work period, not the time when the log entry was physically written. Used to determine the default value for the Duration fields of templates. This entry is updated automatically, but can also be modified manually.
Export start date	The start date for log entry exports. Only log entries that are younger will be exported.
Export end date	The end date for log entry exports. Only log entries that are older will be exported.
Export directory	The directory to which the last export file was written. Used as the default for the next export.
Look and Feel	The Look and Feel of the JTimeTracker GUI. Changes will take effect immediately, but full effect might require a restart of JTimeTracker.
SkinLF Themepack	The Themepack (aka skin) that is used when the SkinLF Look and Feel is selected. Changes will take effect immediately, but full effect might require a restart of JTimeTracker.
Locale	The locale to use for adapting the JTimeTracker user interface. Several localizations as well as the machine default are available here.
Log display length	The number of log entries shown in the Logbook panel (see Section 2.2.2, “Logbook Panel” [13]). Changing this setting takes effect immediately.
Log display columns	The number of columns shown in the Logbook panel (see Section 2.2.2, “Logbook Panel” [13]). Changing this setting takes effect immediately.

Appendix A. License

JTimeTracker consists entirely of OSI Certified Open Source Software. It is licensed under the terms of the Expatriate (MIT) License (see below), except for several third-party libraries and components that are licensed under the terms of various other Open Source licenses. For the complete list of third-party components used and their respective licenses, see Appendix B, *Third-Party Components* [19].

```
Copyright (c) 2002-2003 Rolf F. Katzenberger <rfkat@gmx.net>
```

```
This software is OSI Certified Open Source Software.  
OSI Certified is a certification mark of the Open Source Initiative.
```

```
Permission is hereby granted, free of charge, to any person obtaining a copy  
of this software and associated documentation files (the "Software"), to deal  
in the Software without restriction, including without limitation the rights  
to use, copy, modify, merge, publish, distribute, sublicense, and/or sell  
copies of the Software, and to permit persons to whom the Software is  
furnished to do so, subject to the following conditions:
```

```
The above copyright notice and this permission notice shall be included in all  
copies or substantial portions of the Software.
```

```
THE SOFTWARE IS PROVIDED "AS IS", WITHOUT WARRANTY OF ANY KIND, EXPRESS OR  
IMPLIED, INCLUDING BUT NOT LIMITED TO THE WARRANTIES OF MERCHANTABILITY, FITNESS FOR  
A PARTICULAR PURPOSE AND NONINFRINGEMENT. IN NO EVENT SHALL THE AUTHORS OR  
COPYRIGHT HOLDERS BE LIABLE FOR ANY CLAIM, DAMAGES OR OTHER LIABILITY, WHETHER IN  
AN ACTION OF CONTRACT, TORT OR OTHERWISE, ARISING FROM, OUT OF OR IN CONNECTION  
WITH THE SOFTWARE OR THE USE OR OTHER DEALINGS IN THE SOFTWARE.
```

Appendix B. Third-Party Components

JTimeTracker uses a number of third-party libraries and components, which are Open Source software, but licensed under licenses different from the one of JTimeTracker.

B.1. Components

B.1.1. WerXBus-RC2

WerXBus is used as the internal bus system for all components. It replaces the old Observable-based mechanism. More information about WerX is available under <http://sourceforge.net/projects/werx> [http://sourceforge.net/projects/werx] WerX is licensed under the terms of the GNU Lesser General Public Licence (LGPL), Version 2.1 (see Section B.2.3, “GNU Lesser General Public Licence (LGPL), Version 2.1” [23]).

B.1.2. Log4J, Release 1.2.8

Log4J is the logging library used to create timer and system log files. More information about Log4J is available under <http://jakarta.apache.org/log4j/index.html> [http://jakarta.apache.org/log4j/index.html] Log4J licensed is licensed under the terms of The Apache Software License, Version 1.1 (see Section B.2.1, “The Apache Software License, Version 1.1” [21]).

B.1.3. dom4j, Release 1.4

dom4j is used to parse XML files quickly and to extract information from XML files via XSLT. More information about dom4j is available under <http://sourceforge.net/projects/dom4j> [http://sourceforge.net/projects/dom4j] dom4j is licensed under the terms of a BSD style license (see Section B.2.2, “dom4j BSD style license” [22]).

B.1.4. POI, Release 1.5.1 Final

POI is the library used to create Excel files. More information about POI is available under <http://jakarta.apache.org/poi/index.html> [http://jakarta.apache.org/poi/index.html] POI licensed is licensed under the terms of The Apache Software License, Version 1.1 (see Section B.2.1, “The Apache Software License, Version 1.1” [21]).

B.1.5. JFreeChart, Release 0.9.8, including JCommon, Release 0.8.0

JFreeChart is used to create chart evaluations of the logged data. More information about JFreeChart is available under <http://www.object-refinery.com/jfreechart> [http://www.object-refinery.com/jfreechart] JFreeChart and JCommon are licensed under the terms of the GNU Lesser General Public Licence (LGPL), Version 2.1 (see Section B.2.3, “GNU Lesser General Public Licence (LGPL), Version 2.1” [?]).

B.1.6. Janel, Release 1.0.2

Janel is a Java Native Launcher for Microsoft Windows™. More information about Janel is available under <http://sourceforge.net/projects/janel> [http://sourceforge.net/projects/janel] Janel is licensed under a MIT-style Licence (see Section B.2.4, “Janel MIT-style license” [31]).

B.1.7. clockface.inc

The macros in clockface.inc were used to render the splash screen image. More information about clockface.inc is available under <http://www.donovansweb.com/~chaffe/clocks.html> [<http://www.donovansweb.com/~chaffe/clocks.html>] clockface.inc is Copyright © 2002 by Robert Chaffe and has been made available by him putting this nice statement into the file header: "Everybody is free to use these macros as they please." Thank you very much!

B.1.8. Kunststoff Look & Feel, Release 2.0.1

Kunststoff Look & Feel is used to give the JTimeTracker GUI a nicer appearance. More information about Kunststoff Look & Feel is available under <http://www.incors.org> [<http://www.incors.org>] Kunststoff Look & Feel is licensed under the terms of the GNU Lesser General Public Licence (LGPL), Version 2.1 (see Section B.2.3, "GNU Lesser General Public Licence (LGPL), Version 2.1" [23]).

B.1.9. Metouia Look & Feel, Release 1.0 beta

Metouia Look & Feel is used to give the JTimeTracker GUI a nicer appearance. More information about Metouia Look & Feel is available under <http://mlf.sourceforge.net> [<http://www.incors.org>] Metouia Look & Feel is licensed under the terms of the GNU Lesser General Public Licence (LGPL), Version 2.1 (see Section B.2.3, "GNU Lesser General Public Licence (LGPL), Version 2.1" [23]).

B.1.10. SkinLF Look & Feel, Release 1.2.3

SkinLF Look & Feel is used to give the JTimeTracker GUI a nicer appearance. In addition to standard Look & Feel libraries, SkinLF can use themepacks. More information about Skin Look & Feel is available under <http://www.L2FProd.com/software/skinlf/index.html> [<http://www.L2FProd.com/software/skinlf/index.html>] SkinLF Look & Feel is licensed under the terms of a license that is similar to the Expatriate (MIT) license. SkinLF makes use of libraries that are licensed under the terms of other Open Source licenses. For the complete list, see Section B.2.5, "SkinLF license" [31].

B.1.11. GlyphsPro collection of high colour 16x16 and 24x24 toolbar glyphs

GlyphsPro is used to populate the JTimeTracker GUI with nice icons, in combination with all Look & Feel options. More information about GlyphsPro is available under <http://www.glyfz.com> [<http://www.glyfz.com>]. The free release is not listed there anymore, but may still be found here: <http://icons4free.artshost.com> [<http://icons4free.artshost.com>]. Please follow the "XP Icons" links. GlyphsPro is licensed under the Section B.2.7, "GlyphsPro license" [33].

B.1.12. DocBook DTD, Release 4.1.2

The Docbook DTD is used to validate the XML file that contains the software documentation. More information about DocBook is available under <http://www.oasis-open.org/docbook/> [<http://www.oasis-open.org/docbook/>] The DocBook DTD is licensed under the terms of a proprietary, but Open-Source-style license (see Section B.2.6, "DocBook license" [33]).

B.1.13. Development-Only Third-Party Components

The following components are used at development time only, and therefore not included in the minimal distribution.

B.1.13.1. Saxon, Release 6.5.2

The Saxon XML parser is used to create the PDF and online documentations from XML sources. The inbuilt parser of JDK 1.4™ More information about Saxon is available under <http://saxon.sourceforge.net> [http://saxon.sourceforge.net] The Saxon XML parser is licensed under the terms of the Mozilla Public License Version 1.0 (see Section B.2.8, “Mozilla Public License (MPL), Version 1.0” [34]), with the exception of the contained Aelfred parser, which is licensed under the proprietary AElfired License (see Section B.2.9, “AElfired license” [40]).

B.1.13.2. mtxlsIt, Version 1.5

mtxlsIt is used to trigger the runs of Saxon from within the Ant build tool. More information about mtxlsIt is available under <http://mtxlsIt.sourceforge.net> [http://mtxlsIt.sourceforge.net]. More information about Ant is available under <http://ant.apache.org> [http://ant.apache.org]. The Saxon XML parser is licensed under the terms of The Apache Software License, Version 1.1 (see Section B.2.1, “The Apache Software License, Version 1.1” [21]).

B.1.13.3. Checkstyle, Version 3.0

Checkstyle is used to ensure that the Java sources of JTimeTracker conform to the coding standards of its author. More information about Checkstyle is available under <http://checkstyle.sourceforge.net> [http://checkstyle.sourceforge.net] Checkstyle is licensed under the terms of the GNU Lesser General Public License (LGPL), Version 2.1 (see Section B.2.3, “GNU Lesser General Public License (LGPL), Version 2.1” [23]).

B.1.13.4. JUnit, Release 3.8.1

JUnit is used as the framework for JTimeTracker's unit tests. More information about JUnit is available under <http://junit.org> [http://junit.org] JUnit is licensed under the terms of the Common Public License, Version 1.0 (see Section B.2.10, “Common Public License (CPL), Version 1.0” [40]).

B.2. Third-Party Licenses

B.2.1. The Apache Software License, Version 1.1

```

/*
 * =====
 *                               The Apache Software License, Version 1.1
 * =====
 *
 *   Copyright (C) 1999 The Apache Software Foundation. All rights reserved.
 *
 * Redistribution and use in source and binary forms, with or without modifica-
 * tion, are permitted provided that the following conditions are met:
 *
 * 1. Redistributions of source code must retain the above copyright notice,
 *    this list of conditions and the following disclaimer.
 *
 * 2. Redistributions in binary form must reproduce the above copyright notice,
 *    this list of conditions and the following disclaimer in the documentation
 *    and/or other materials provided with the distribution.
 *
 * 3. The end-user documentation included with the redistribution, if any, must
 *    include the following acknowledgment: "This product includes software
 *    developed by the Apache Software Foundation (http://www.apache.org/)."
```

```
* Alternately, this acknowledgment may appear in the software itself, if
* and wherever such third-party acknowledgments normally appear.
*
* 4. The names "log4j" and "Apache Software Foundation" must not be used to
* endorse or promote products derived from this software without prior
* written permission. For written permission, please contact
* apache@apache.org.
*
* 5. Products derived from this software may not be called "Apache", nor may
* "Apache" appear in their name, without prior written permission of the
* Apache Software Foundation.
*
* THIS SOFTWARE IS PROVIDED ``AS IS'' AND ANY EXPRESSED OR IMPLIED WARRANTIES,
* INCLUDING, BUT NOT LIMITED TO, THE IMPLIED WARRANTIES OF MERCHANTABILITY AND
* FITNESS FOR A PARTICULAR PURPOSE ARE DISCLAIMED. IN NO EVENT SHALL THE
* APACHE SOFTWARE FOUNDATION OR ITS CONTRIBUTORS BE LIABLE FOR ANY DIRECT,
* INDIRECT, INCIDENTAL, SPECIAL, EXEMPLARY, OR CONSEQUENTIAL DAMAGES (INCLU-
* DING, BUT NOT LIMITED TO, PROCUREMENT OF SUBSTITUTE GOODS OR SERVICES; LOSS
* OF USE, DATA, OR PROFITS; OR BUSINESS INTERRUPTION) HOWEVER CAUSED AND ON
* ANY THEORY OF LIABILITY, WHETHER IN CONTRACT, STRICT LIABILITY, OR TORT
* (INCLUDING NEGLIGENCE OR OTHERWISE) ARISING IN ANY WAY OUT OF THE USE OF
* THIS SOFTWARE, EVEN IF ADVISED OF THE POSSIBILITY OF SUCH DAMAGE.
*
* This software consists of voluntary contributions made by many individuals
* on behalf of the Apache Software Foundation. For more information on the
* Apache Software Foundation, please see <http://www.apache.org/>.
*
*/
```

B.2.2. dom4j BSD style license

Redistribution and use of this software and associated documentation ("Software"), with or without modification, are permitted provided that the following conditions are met:

1. Redistributions of source code must retain copyright statements and notices. Redistributions must also contain a copy of this document.
2. Redistributions in binary form must reproduce the above copyright notice, this list of conditions and the following disclaimer in the documentation and/or other materials provided with the distribution.
3. The name "DOM4J" must not be used to endorse or promote products derived from this Software without prior written permission of MetaStuff, Ltd. For written permission, please contact dom4j-info@metastuff.com.
4. Products derived from this Software may not be called "DOM4J" nor may "DOM4J" appear in their names without prior written permission of MetaStuff, Ltd. DOM4J is a registered trademark of MetaStuff, Ltd. Due credit should be given to the DOM4J Project (<http://dom4j.org/>).

THIS SOFTWARE IS PROVIDED BY METASTUFF, LTD. AND CONTRIBUTORS ``AS IS'' AND ANY EXPRESSED OR IMPLIED WARRANTIES, INCLUDING, BUT NOT LIMITED TO, THE IMPLIED WARRANTIES OF MERCHANTABILITY AND FITNESS FOR A PARTICULAR PURPOSE ARE DISCLAIMED. IN NO EVENT SHALL METASTUFF, LTD. OR ITS CONTRIBUTORS BE LIABLE FOR ANY DIRECT, INDIRECT, INCIDENTAL, SPECIAL, EXEMPLARY, OR CONSEQUENTIAL DAMAGES (INCLUDING, BUT NOT LIMITED TO, PROCUREMENT OF SUBSTITUTE GOODS OR SERVICES; LOSS OF USE, DATA, OR

PROFITS; OR BUSINESS INTERRUPTION) HOWEVER CAUSED AND ON ANY THEORY OF LIABILITY, WHETHER IN CONTRACT, STRICT LIABILITY, OR TORT (INCLUDING NEGLIGENCE OR OTHERWISE) ARISING IN ANY WAY OUT OF THE USE OF THIS SOFTWARE, EVEN IF ADVISED OF THE POSSIBILITY OF SUCH DAMAGE.

Copyright 2001 (C) MetaStuff, Ltd. All Rights Reserved.

B.2.3. GNU Lesser General Public Licence (LGPL), Version 2.1

GNU LESSER GENERAL PUBLIC LICENSE
Version 2.1, February 1999

Copyright (C) 1991, 1999 Free Software Foundation, Inc.
59 Temple Place, Suite 330, Boston, MA 02111-1307 USA
Everyone is permitted to copy and distribute verbatim copies
of this license document, but changing it is not allowed.

[This is the first released version of the Lesser GPL. It also counts
as the successor of the GNU Library Public License, version 2, hence
the version number 2.1.]

Preamble

The licenses for most software are designed to take away your freedom to share and change it. By contrast, the GNU General Public Licenses are intended to guarantee your freedom to share and change free software--to make sure the software is free for all its users.

This license, the Lesser General Public License, applies to some specially designated software packages--typically libraries--of the Free Software Foundation and other authors who decide to use it. You can use it too, but we suggest you first think carefully about whether this license or the ordinary General Public License is the better strategy to use in any particular case, based on the explanations below.

When we speak of free software, we are referring to freedom of use, not price. Our General Public Licenses are designed to make sure that you have the freedom to distribute copies of free software (and charge for this service if you wish); that you receive source code or can get it if you want it; that you can change the software and use pieces of it in new free programs; and that you are informed that you can do these things.

To protect your rights, we need to make restrictions that forbid distributors to deny you these rights or to ask you to surrender these rights. These restrictions translate to certain responsibilities for you if you distribute copies of the library or if you modify it.

For example, if you distribute copies of the library, whether gratis or for a fee, you must give the recipients all the rights that we gave you. You must make sure that they, too, receive or can get the source code. If you link other code with the library, you must provide complete object files to the recipients, so that they can relink them with the library after making changes to the library and recompiling it. And you must show them these terms so they know their rights.

We protect your rights with a two-step method: (1) we copyright the library, and (2) we offer you this license, which gives you legal permission to copy, distribute and/or modify the library.

To protect each distributor, we want to make it very clear that there is no warranty for the free library. Also, if the library is modified by someone else and passed on, the recipients should know that what they have is not the original version, so that the original author's reputation will not be affected by problems that might be introduced by others.

Finally, software patents pose a constant threat to the existence of any free program. We wish to make sure that a company cannot effectively restrict the users of a free program by obtaining a restrictive license from a patent holder. Therefore, we insist that any patent license obtained for a version of the library must be consistent with the full freedom of use specified in this license.

Most GNU software, including some libraries, is covered by the ordinary GNU General Public License. This license, the GNU Lesser General Public License, applies to certain designated libraries, and is quite different from the ordinary General Public License. We use this license for certain libraries in order to permit linking those libraries into non-free programs.

When a program is linked with a library, whether statically or using a shared library, the combination of the two is legally speaking a combined work, a derivative of the original library. The ordinary General Public License therefore permits such linking only if the entire combination fits its criteria of freedom. The Lesser General Public License permits more lax criteria for linking other code with the library.

We call this license the "Lesser" General Public License because it does Less to protect the user's freedom than the ordinary General Public License. It also provides other free software developers Less of an advantage over competing non-free programs. These disadvantages are the reason we use the ordinary General Public License for many libraries. However, the Lesser license provides advantages in certain special circumstances.

For example, on rare occasions, there may be a special need to encourage the widest possible use of a certain library, so that it becomes a de-facto standard. To achieve this, non-free programs must be allowed to use the library. A more frequent case is that a free library does the same job as widely used non-free libraries. In this case, there is little to gain by limiting the free library to free software only, so we use the Lesser General Public License.

In other cases, permission to use a particular library in non-free programs enables a greater number of people to use a large body of free software. For example, permission to use the GNU C Library in non-free programs enables many more people to use the whole GNU operating system, as well as its variant, the GNU/Linux operating system.

Although the Lesser General Public License is Less protective of the users' freedom, it does ensure that the user of a program that is linked with the Library has the freedom and the wherewithal to run that program using a modified version of the Library.

The precise terms and conditions for copying, distribution and modification follow. Pay close attention to the difference between a "work based on the library" and a "work that uses the library". The

former contains code derived from the library, whereas the latter must be combined with the library in order to run.

GNU LESSER GENERAL PUBLIC LICENSE
TERMS AND CONDITIONS FOR COPYING, DISTRIBUTION AND MODIFICATION

0. This License Agreement applies to any software library or other program which contains a notice placed by the copyright holder or other authorized party saying it may be distributed under the terms of this Lesser General Public License (also called "this License"). Each licensee is addressed as "you".

A "library" means a collection of software functions and/or data prepared so as to be conveniently linked with application programs (which use some of those functions and data) to form executables.

The "Library", below, refers to any such software library or work which has been distributed under these terms. A "work based on the Library" means either the Library or any derivative work under copyright law: that is to say, a work containing the Library or a portion of it, either verbatim or with modifications and/or translated straightforwardly into another language. (Hereinafter, translation is included without limitation in the term "modification".)

"Source code" for a work means the preferred form of the work for making modifications to it. For a library, complete source code means all the source code for all modules it contains, plus any associated interface definition files, plus the scripts used to control compilation and installation of the library.

Activities other than copying, distribution and modification are not covered by this License; they are outside its scope. The act of running a program using the Library is not restricted, and output from such a program is covered only if its contents constitute a work based on the Library (independent of the use of the Library in a tool for writing it). Whether that is true depends on what the Library does and what the program that uses the Library does.

1. You may copy and distribute verbatim copies of the Library's complete source code as you receive it, in any medium, provided that you conspicuously and appropriately publish on each copy an appropriate copyright notice and disclaimer of warranty; keep intact all the notices that refer to this License and to the absence of any warranty; and distribute a copy of this License along with the Library.

You may charge a fee for the physical act of transferring a copy, and you may at your option offer warranty protection in exchange for a fee.

2. You may modify your copy or copies of the Library or any portion of it, thus forming a work based on the Library, and copy and distribute such modifications or work under the terms of Section 1 above, provided that you also meet all of these conditions:

- a) The modified work must itself be a software library.
- b) You must cause the files modified to carry prominent notices stating that you changed the files and the date of any change.
- c) You must cause the whole of the work to be licensed at no charge to all third parties under the terms of this License.
- d) If a facility in the modified Library refers to a function or a

table of data to be supplied by an application program that uses the facility, other than as an argument passed when the facility is invoked, then you must make a good faith effort to ensure that, in the event an application does not supply such function or table, the facility still operates, and performs whatever part of its purpose remains meaningful.

(For example, a function in a library to compute square roots has a purpose that is entirely well-defined independent of the application. Therefore, Subsection 2d requires that any application-supplied function or table used by this function must be optional: if the application does not supply it, the square root function must still compute square roots.)

These requirements apply to the modified work as a whole. If identifiable sections of that work are not derived from the Library, and can be reasonably considered independent and separate works in themselves, then this License, and its terms, do not apply to those sections when you distribute them as separate works. But when you distribute the same sections as part of a whole which is a work based on the Library, the distribution of the whole must be on the terms of this License, whose permissions for other licensees extend to the entire whole, and thus to each and every part regardless of who wrote it.

Thus, it is not the intent of this section to claim rights or contest your rights to work written entirely by you; rather, the intent is to exercise the right to control the distribution of derivative or collective works based on the Library.

In addition, mere aggregation of another work not based on the Library with the Library (or with a work based on the Library) on a volume of a storage or distribution medium does not bring the other work under the scope of this License.

3. You may opt to apply the terms of the ordinary GNU General Public License instead of this License to a given copy of the Library. To do this, you must alter all the notices that refer to this License, so that they refer to the ordinary GNU General Public License, version 2, instead of to this License. (If a newer version than version 2 of the ordinary GNU General Public License has appeared, then you can specify that version instead if you wish.) Do not make any other change in these notices.

Once this change is made in a given copy, it is irreversible for that copy, so the ordinary GNU General Public License applies to all subsequent copies and derivative works made from that copy.

This option is useful when you wish to copy part of the code of the Library into a program that is not a library.

4. You may copy and distribute the Library (or a portion or derivative of it, under Section 2) in object code or executable form under the terms of Sections 1 and 2 above provided that you accompany it with the complete corresponding machine-readable source code, which must be distributed under the terms of Sections 1 and 2 above on a medium customarily used for software interchange.

If distribution of object code is made by offering access to copy from a designated place, then offering equivalent access to copy the source code from the same place satisfies the requirement to distribute the source code, even though third parties are not compelled to copy the source along with the object code.

5. A program that contains no derivative of any portion of the Library, but is designed to work with the Library by being compiled or linked with it, is called a "work that uses the Library". Such a work, in isolation, is not a derivative work of the Library, and therefore falls outside the scope of this License.

However, linking a "work that uses the Library" with the Library creates an executable that is a derivative of the Library (because it contains portions of the Library), rather than a "work that uses the library". The executable is therefore covered by this License. Section 6 states terms for distribution of such executables.

When a "work that uses the Library" uses material from a header file that is part of the Library, the object code for the work may be a derivative work of the Library even though the source code is not. Whether this is true is especially significant if the work can be linked without the Library, or if the work is itself a library. The threshold for this to be true is not precisely defined by law.

If such an object file uses only numerical parameters, data structure layouts and accessors, and small macros and small inline functions (ten lines or less in length), then the use of the object file is unrestricted, regardless of whether it is legally a derivative work. (Executables containing this object code plus portions of the Library will still fall under Section 6.)

Otherwise, if the work is a derivative of the Library, you may distribute the object code for the work under the terms of Section 6. Any executables containing that work also fall under Section 6, whether or not they are linked directly with the Library itself.

6. As an exception to the Sections above, you may also combine or link a "work that uses the Library" with the Library to produce a work containing portions of the Library, and distribute that work under terms of your choice, provided that the terms permit modification of the work for the customer's own use and reverse engineering for debugging such modifications.

You must give prominent notice with each copy of the work that the Library is used in it and that the Library and its use are covered by this License. You must supply a copy of this License. If the work during execution displays copyright notices, you must include the copyright notice for the Library among them, as well as a reference directing the user to the copy of this License. Also, you must do one of these things:

a) Accompany the work with the complete corresponding machine-readable source code for the Library including whatever changes were used in the work (which must be distributed under Sections 1 and 2 above); and, if the work is an executable linked with the Library, with the complete machine-readable "work that uses the Library", as object code and/or source code, so that the user can modify the Library and then relink to produce a modified executable containing the modified Library. (It is understood that the user who changes the contents of definitions files in the Library will not necessarily be able to recompile the application to use the modified definitions.)

b) Use a suitable shared library mechanism for linking with the Library. A suitable mechanism is one that (1) uses at run time a copy of the library already present on the user's computer system, rather than copying library functions into the executable, and (2) will operate properly with a modified version of the library, if the user installs one, as long as the modified version is

interface-compatible with the version that the work was made with.

c) Accompany the work with a written offer, valid for at least three years, to give the same user the materials specified in Subsection 6a, above, for a charge no more than the cost of performing this distribution.

d) If distribution of the work is made by offering access to copy from a designated place, offer equivalent access to copy the above specified materials from the same place.

e) Verify that the user has already received a copy of these materials or that you have already sent this user a copy.

For an executable, the required form of the "work that uses the Library" must include any data and utility programs needed for reproducing the executable from it. However, as a special exception, the materials to be distributed need not include anything that is normally distributed (in either source or binary form) with the major components (compiler, kernel, and so on) of the operating system on which the executable runs, unless that component itself accompanies the executable.

It may happen that this requirement contradicts the license restrictions of other proprietary libraries that do not normally accompany the operating system. Such a contradiction means you cannot use both them and the Library together in an executable that you distribute.

7. You may place library facilities that are a work based on the Library side-by-side in a single library together with other library facilities not covered by this License, and distribute such a combined library, provided that the separate distribution of the work based on the Library and of the other library facilities is otherwise permitted, and provided that you do these two things:

a) Accompany the combined library with a copy of the same work based on the Library, uncombined with any other library facilities. This must be distributed under the terms of the Sections above.

b) Give prominent notice with the combined library of the fact that part of it is a work based on the Library, and explaining where to find the accompanying uncombined form of the same work.

8. You may not copy, modify, sublicense, link with, or distribute the Library except as expressly provided under this License. Any attempt otherwise to copy, modify, sublicense, link with, or distribute the Library is void, and will automatically terminate your rights under this License. However, parties who have received copies, or rights, from you under this License will not have their licenses terminated so long as such parties remain in full compliance.

9. You are not required to accept this License, since you have not signed it. However, nothing else grants you permission to modify or distribute the Library or its derivative works. These actions are prohibited by law if you do not accept this License. Therefore, by modifying or distributing the Library (or any work based on the Library), you indicate your acceptance of this License to do so, and all its terms and conditions for copying, distributing or modifying the Library or works based on it.

10. Each time you redistribute the Library (or any work based on the Library), the recipient automatically receives a license from the

original licensor to copy, distribute, link with or modify the Library subject to these terms and conditions. You may not impose any further restrictions on the recipients' exercise of the rights granted herein. You are not responsible for enforcing compliance by third parties with this License.

11. If, as a consequence of a court judgment or allegation of patent infringement or for any other reason (not limited to patent issues), conditions are imposed on you (whether by court order, agreement or otherwise) that contradict the conditions of this License, they do not excuse you from the conditions of this License. If you cannot distribute so as to satisfy simultaneously your obligations under this License and any other pertinent obligations, then as a consequence you may not distribute the Library at all. For example, if a patent license would not permit royalty-free redistribution of the Library by all those who receive copies directly or indirectly through you, then the only way you could satisfy both it and this License would be to refrain entirely from distribution of the Library.

If any portion of this section is held invalid or unenforceable under any particular circumstance, the balance of the section is intended to apply, and the section as a whole is intended to apply in other circumstances.

It is not the purpose of this section to induce you to infringe any patents or other property right claims or to contest validity of any such claims; this section has the sole purpose of protecting the integrity of the free software distribution system which is implemented by public license practices. Many people have made generous contributions to the wide range of software distributed through that system in reliance on consistent application of that system; it is up to the author/donor to decide if he or she is willing to distribute software through any other system and a licensee cannot impose that choice.

This section is intended to make thoroughly clear what is believed to be a consequence of the rest of this License.

12. If the distribution and/or use of the Library is restricted in certain countries either by patents or by copyrighted interfaces, the original copyright holder who places the Library under this License may add an explicit geographical distribution limitation excluding those countries, so that distribution is permitted only in or among countries not thus excluded. In such case, this License incorporates the limitation as if written in the body of this License.

13. The Free Software Foundation may publish revised and/or new versions of the Lesser General Public License from time to time. Such new versions will be similar in spirit to the present version, but may differ in detail to address new problems or concerns.

Each version is given a distinguishing version number. If the Library specifies a version number of this License which applies to it and "any later version", you have the option of following the terms and conditions either of that version or of any later version published by the Free Software Foundation. If the Library does not specify a license version number, you may choose any version ever published by the Free Software Foundation.

14. If you wish to incorporate parts of the Library into other free programs whose distribution conditions are incompatible with these, write to the author to ask for permission. For software which is copyrighted by the Free Software Foundation, write to the Free Software Foundation; we sometimes make exceptions for this. Our decision will be guided by the two goals of preserving the free status

of all derivatives of our free software and of promoting the sharing and reuse of software generally.

NO WARRANTY

15. BECAUSE THE LIBRARY IS LICENSED FREE OF CHARGE, THERE IS NO WARRANTY FOR THE LIBRARY, TO THE EXTENT PERMITTED BY APPLICABLE LAW. EXCEPT WHEN OTHERWISE STATED IN WRITING THE COPYRIGHT HOLDERS AND/OR OTHER PARTIES PROVIDE THE LIBRARY "AS IS" WITHOUT WARRANTY OF ANY KIND, EITHER EXPRESSED OR IMPLIED, INCLUDING, BUT NOT LIMITED TO, THE IMPLIED WARRANTIES OF MERCHANTABILITY AND FITNESS FOR A PARTICULAR PURPOSE. THE ENTIRE RISK AS TO THE QUALITY AND PERFORMANCE OF THE LIBRARY IS WITH YOU. SHOULD THE LIBRARY PROVE DEFECTIVE, YOU ASSUME THE COST OF ALL NECESSARY SERVICING, REPAIR OR CORRECTION.

16. IN NO EVENT UNLESS REQUIRED BY APPLICABLE LAW OR AGREED TO IN WRITING WILL ANY COPYRIGHT HOLDER, OR ANY OTHER PARTY WHO MAY MODIFY AND/OR REDISTRIBUTE THE LIBRARY AS PERMITTED ABOVE, BE LIABLE TO YOU FOR DAMAGES, INCLUDING ANY GENERAL, SPECIAL, INCIDENTAL OR CONSEQUENTIAL DAMAGES ARISING OUT OF THE USE OR INABILITY TO USE THE LIBRARY (INCLUDING BUT NOT LIMITED TO LOSS OF DATA OR DATA BEING RENDERED INACCURATE OR LOSSES SUSTAINED BY YOU OR THIRD PARTIES OR A FAILURE OF THE LIBRARY TO OPERATE WITH ANY OTHER SOFTWARE), EVEN IF SUCH HOLDER OR OTHER PARTY HAS BEEN ADVISED OF THE POSSIBILITY OF SUCH DAMAGES.

END OF TERMS AND CONDITIONS

How to Apply These Terms to Your New Libraries

If you develop a new library, and you want it to be of the greatest possible use to the public, we recommend making it free software that everyone can redistribute and change. You can do so by permitting redistribution under these terms (or, alternatively, under the terms of the ordinary General Public License).

To apply these terms, attach the following notices to the library. It is safest to attach them to the start of each source file to most effectively convey the exclusion of warranty; and each file should have at least the "copyright" line and a pointer to where the full notice is found.

```
<one line to give the library's name and a brief idea of what it does.>  
Copyright (C) <year> <name of author>
```

```
This library is free software; you can redistribute it and/or  
modify it under the terms of the GNU Lesser General Public  
License as published by the Free Software Foundation; either  
version 2.1 of the License, or (at your option) any later version.
```

```
This library is distributed in the hope that it will be useful,  
but WITHOUT ANY WARRANTY; without even the implied warranty of  
MERCHANTABILITY or FITNESS FOR A PARTICULAR PURPOSE. See the GNU  
Lesser General Public License for more details.
```

```
You should have received a copy of the GNU Lesser General Public  
License along with this library; if not, write to the Free Software  
Foundation, Inc., 59 Temple Place, Suite 330, Boston, MA 02111-1307 USA
```

Also add information on how to contact you by electronic and paper mail.

You should also get your employer (if you work as a programmer) or your school, if any, to sign a "copyright disclaimer" for the library, if necessary. Here is a sample; alter the names:

```
Yoyodyne, Inc., hereby disclaims all copyright interest in the
library `Frob' (a library for tweaking knobs) written by James Random Hacker.
```

```
<signature of Ty Coon>, 1 April 1990
Ty Coon, President of Vice
```

```
That's all there is to it!
```

B.2.4. Janel MIT-style license

```
Copyright (c) 2003 Timothy D. Kil
```

```
Permission is hereby granted, free of charge, to any person obtaining a copy
of this software and associated documentation files (the "Software"), to
deal in the Software without restriction, including without limitation the
rights to use, copy, modify, merge, publish, distribute, sublicense, and/or
sell copies of the Software, and to permit persons to whom the Software is
furnished to do so, subject to the following conditions:
```

```
The above copyright notice and this permission notice shall be included in
all copies or substantial portions of the Software.
```

```
THE SOFTWARE IS PROVIDED "AS IS", WITHOUT WARRANTY OF ANY KIND, EXPRESS OR
IMPLIED, INCLUDING BUT NOT LIMITED TO THE WARRANTIES OF MERCHANTABILITY,
FITNESS FOR A PARTICULAR PURPOSE AND NONINFRINGEMENT. IN NO EVENT SHALL THE
AUTHORS OR COPYRIGHT HOLDERS BE LIABLE FOR ANY CLAIM, DAMAGES OR OTHER
LIABILITY, WHETHER IN AN ACTION OF CONTRACT, TORT OR OTHERWISE, ARISING
FROM, OUT OF OR IN CONNECTION WITH THE SOFTWARE OR THE USE OR OTHER DEALINGS
IN THE SOFTWARE.
```

B.2.5. SkinLF license

```
/* =====
 *
 * Skin Look And Feel 1.2.3 License.
 *
 * Copyright (c) 2000-2002 L2FProd.com. All rights reserved.
 *
 * Redistribution and use in source and binary forms, with or without
 * modification, are permitted provided that the following conditions
 * are met:
 *
 * 1. Redistributions of source code must retain the above copyright
 * notice, this list of conditions and the following disclaimer.
 *
 * 2. Redistributions in binary form must reproduce the above copyright
 * notice, this list of conditions and the following disclaimer in
 * the documentation and/or other materials provided with the
 * distribution.
 *
 * 3. The end-user documentation included with the redistribution, if
 * any, must include the following acknowledgement:
```

```
*      "This product includes software developed by L2FProd.com
*      (http://www.L2FProd.com/)."
*      Alternately, this acknowledgement may appear in the software itself,
*      if and wherever such third-party acknowledgements normally appear.
*
* 4. The names "Skin Look And Feel", "SkinLF" and "L2FProd.com" must not
*     be used to endorse or promote products derived from this software
*     without prior written permission. For written permission, please
*     contact info@L2FProd.com.
*
* 5. Products derived from this software may not be called "SkinLF"
*     nor may "SkinLF" appear in their names without prior written
*     permission of L2FProd.com.
*
* THIS SOFTWARE IS PROVIDED ``AS IS'' AND ANY EXPRESSED OR IMPLIED
* WARRANTIES, INCLUDING, BUT NOT LIMITED TO, THE IMPLIED WARRANTIES
* OF MERCHANTABILITY AND FITNESS FOR A PARTICULAR PURPOSE ARE
* DISCLAIMED.  IN NO EVENT SHALL L2FPROD.COM OR ITS CONTRIBUTORS BE
* LIABLE FOR ANY DIRECT, INDIRECT, INCIDENTAL, SPECIAL, EXEMPLARY, OR
* CONSEQUENTIAL DAMAGES (INCLUDING, BUT NOT LIMITED TO, PROCUREMENT OF
* SUBSTITUTE GOODS OR SERVICES; LOSS OF USE, DATA, OR PROFITS; OR
* BUSINESS INTERRUPTION) HOWEVER CAUSED AND ON ANY THEORY OF LIABILITY,
* WHETHER IN CONTRACT, STRICT LIABILITY, OR TORT (INCLUDING NEGLIGENCE
* OR OTHERWISE) ARISING IN ANY WAY OUT OF THE USE OF THIS SOFTWARE,
* EVEN IF ADVISED OF THE POSSIBILITY OF SUCH DAMAGE.
* =====
*/
```

This is the license for nanoXML,
used by Skin Look And Feel for Theme Pack definitions

nanoXML is available at <http://nanoXML.sourceforge.net>

Copyright (C) 2000 Marc De Scheemaeker, All Rights Reserved.

This software is provided 'as-is', without any express or implied warranty. In no event will the authors be held liable for any damages arising from the use of this software.

Permission is granted to anyone to use this software for any purpose, including commercial applications, and to alter it and redistribute it freely, subject to the following restrictions:

1. The origin of this software must not be misrepresented; you must not claim that you wrote the original software. If you use this software in a product, an acknowledgment in the product documentation would be appreciated but is not required.
2. Altered source versions must be plainly marked as such, and must not be misrepresented as being the original software.
3. This notice may not be removed or altered from any source distribution.

This is the license for sixlegs PNG
used by Skin Look And Feel to load PNG images

com.sixlegs.image.png - Java package to read and display PNG images
Copyright (C) 1998, 1999, 2001 Chris Nokleberg

This library is free software; you can redistribute it and/or modify it under the terms of the GNU Library General Public License as published by the Free Software Foundation; either version 2 of the License, or (at your option) any later version.

This library is distributed in the hope that it will be useful, but WITHOUT ANY WARRANTY; without even the implied warranty of MERCHANTABILITY or FITNESS FOR A PARTICULAR PURPOSE. See the GNU Library General Public License for more details.

You should have received a copy of the GNU Library General Public License along with this library; if not, write to the Free Software Foundation, Inc., 59 Temple Place - Suite 330, Boston, MA 02111-1307, USA.

B.2.6. DocBook license

Copyright 1992-2000 HaL Computer Systems, Inc., O'Reilly & Associates, Inc., ArborText, Inc., Fujitsu Software Corporation, Norman Walsh, and the Organization for the Advancement of Structured Information Standards (OASIS).

Permission to use, copy, modify and distribute the DocBook XML DTD and its accompanying documentation for any purpose and without fee is hereby granted in perpetuity, provided that the above copyright notice and this paragraph appear in all copies. The copyright holders make no representation about the suitability of the DTD for any purpose. It is provided "as is" without expressed or implied warranty.

If you modify the DocBook DTD in any way, except for declaring and referencing additional sets of general entities and declaring additional notations, label your DTD as a variant of DocBook. See the maintenance documentation for more information.

Please direct all questions, bug reports, or suggestions for changes to the docbook@lists.oasis-open.org mailing list. For more information, see <http://www.oasis-open.org/docbook/>.

B.2.7. GlyphsPro license

GLYPHSPRO
=====

GlyphsPro is a collection of high colour 16x16 and 24x24 toolbar glyphs. They have been created in 24bit colour and saved in an optimised 256 colour palette.

A number of the glyphs are unmodified (other than resized and/or re-touched) icons/toolbar glyphs taken from Windows XP and are copyright Microsoft, however may be

used in your applications.

LICENSE

-
1. This readme must always be included when GlyphsPro is distributed.
 2. You may freely use GlyphsPro in an application whether freeware, shareware or commercial.
 3. If you distribute the glyphs you must not take credit for them.
 4. You must not charge for glyphs provided in GlyphsPro or derivatives based on GlyphsPro.
 5. If your web site or software promotes other parties glyph packs then YOU ARE REQUIRED to provide the same level of exposure for Glyphspro.

Marc Keeley
mkeeley@techmarc.co.uk
www.techmarc.co.uk

B.2.8. Mozilla Public License (MPL), Version 1.0

MOZILLA PUBLIC LICENSE
Version 1.0

1. Definitions.

- 1.1. ``Contributor'' means each entity that creates or contributes to the creation of Modifications.
- 1.2. ``Contributor Version'' means the combination of the Original Code, prior Modifications used by a Contributor, and the Modifications made by that particular Contributor.
- 1.3. ``Covered Code'' means the Original Code or Modifications or the combination of the Original Code and Modifications, in each case including portions thereof.
- 1.4. ``Electronic Distribution Mechanism'' means a mechanism generally accepted in the software development community for the electronic transfer of data.
- 1.5. ``Executable'' means Covered Code in any form other than Source Code.
- 1.6. ``Initial Developer'' means the individual or entity identified as the Initial Developer in the Source Code notice required by Exhibit A.
- 1.7. ``Larger Work'' means a work which combines Covered Code or portions thereof with code not governed by the terms of this License.
- 1.8. ``License'' means this document.
- 1.9. ``Modifications'' means any addition to or deletion from the substance or structure of either the Original Code or any previous

Modifications. When Covered Code is released as a series of files, a Modification is:

A. Any addition to or deletion from the contents of a file containing Original Code or previous Modifications.

B. Any new file that contains any part of the Original Code or previous Modifications.

1.10. ``Original Code'' means Source Code of computer software code which is described in the Source Code notice required by Exhibit A as Original Code, and which, at the time of its release under this License is not already Covered Code governed by this License.

1.11. ``Source Code'' means the preferred form of the Covered Code for making modifications to it, including all modules it contains, plus any associated interface definition files, scripts used to control compilation and installation of an Executable, or a list of source code differential comparisons against either the Original Code or another well known, available Covered Code of the Contributor's choice. The Source Code can be in a compressed or archival form, provided the appropriate decompression or de-archiving software is widely available for no charge.

1.12. ``You'' means an individual or a legal entity exercising rights under, and complying with all of the terms of, this License or a future version of this License issued under Section 6.1. For legal entities, ``You'' includes any entity which controls, is controlled by, or is under common control with You. For purposes of this definition, ``control'' means (a) the power, direct or indirect, to cause the direction or management of such entity, whether by contract or otherwise, or (b) ownership of fifty percent (50%) or more of the outstanding shares or beneficial ownership of such entity.

2. Source Code License.

2.1. The Initial Developer Grant.

The Initial Developer hereby grants You a world-wide, royalty-free, non-exclusive license, subject to third party intellectual property claims:

(a) to use, reproduce, modify, display, perform, sublicense and distribute the Original Code (or portions thereof) with or without Modifications, or as part of a Larger Work; and

(b) under patents now or hereafter owned or controlled by Initial Developer, to make, have made, use and sell (``Utilize'') the Original Code (or portions thereof), but solely to the extent that any such patent is reasonably necessary to enable You to Utilize the Original Code (or portions thereof) and not to any greater extent that may be necessary to Utilize further Modifications or combinations.

2.2. Contributor Grant.

Each Contributor hereby grants You a world-wide, royalty-free, non-exclusive license, subject to third party intellectual property claims:

(a) to use, reproduce, modify, display, perform, sublicense and distribute the Modifications created by such Contributor (or portions thereof) either on an unmodified basis, with other Modifications, as Covered Code or as part of a Larger Work; and

(b) under patents now or hereafter owned or controlled by

Contributor, to Utilize the Contributor Version (or portions thereof), but solely to the extent that any such patent is reasonably necessary to enable You to Utilize the Contributor Version (or portions thereof), and not to any greater extent that may be necessary to Utilize further Modifications or combinations.

3. Distribution Obligations.

3.1. Application of License.

The Modifications which You create or to which You contribute are governed by the terms of this License, including without limitation Section 2.2. The Source Code version of Covered Code may be distributed only under the terms of this License or a future version of this License released under Section 6.1, and You must include a copy of this License with every copy of the Source Code You distribute. You may not offer or impose any terms on any Source Code version that alters or restricts the applicable version of this License or the recipients' rights hereunder. However, You may include an additional document offering the additional rights described in Section 3.5.

3.2. Availability of Source Code.

Any Modification which You create or to which You contribute must be made available in Source Code form under the terms of this License either on the same media as an Executable version or via an accepted Electronic Distribution Mechanism to anyone to whom you made an Executable version available; and if made available via Electronic Distribution Mechanism, must remain available for at least twelve (12) months after the date it initially became available, or at least six (6) months after a subsequent version of that particular Modification has been made available to such recipients. You are responsible for ensuring that the Source Code version remains available even if the Electronic Distribution Mechanism is maintained by a third party.

3.3. Description of Modifications.

You must cause all Covered Code to which you contribute to contain a file documenting the changes You made to create that Covered Code and the date of any change. You must include a prominent statement that the Modification is derived, directly or indirectly, from Original Code provided by the Initial Developer and including the name of the Initial Developer in (a) the Source Code, and (b) in any notice in an Executable version or related documentation in which You describe the origin or ownership of the Covered Code.

3.4. Intellectual Property Matters

(a) Third Party Claims.

If You have knowledge that a party claims an intellectual property right in particular functionality or code (or its utilization under this License), you must include a text file with the source code distribution titled ``LEGAL'' which describes the claim and the party making the claim in sufficient detail that a recipient will know whom to contact. If you obtain such knowledge after You make Your Modification available as described in Section 3.2, You shall promptly modify the LEGAL file in all copies You make available thereafter and shall take other steps (such as notifying appropriate mailing lists or newsgroups) reasonably calculated to inform those who received the Covered Code that new knowledge has been obtained.

(b) Contributor APIs.

If Your Modification is an application programming interface and You own or control patents which are reasonably necessary to implement that API, you must also include this information in the LEGAL file.

3.5. Required Notices.

You must duplicate the notice in Exhibit A in each file of the Source Code, and this License in any documentation for the Source Code, where You describe recipients' rights relating to Covered Code. If You created one or more Modification(s), You may add your name as a Contributor to the notice described in Exhibit A. If it is not possible to put such notice in a particular Source Code file due to its structure, then you must include such notice in a location (such as a relevant directory file) where a user would be likely to look for such a notice. You may choose to offer, and to charge a fee for, warranty, support, indemnity or liability obligations to one or more recipients of Covered Code. However, You may do so only on Your own behalf, and not on behalf of the Initial Developer or any Contributor. You must make it absolutely clear than any such warranty, support, indemnity or liability obligation is offered by You alone, and You hereby agree to indemnify the Initial Developer and every Contributor for any liability incurred by the Initial Developer or such Contributor as a result of warranty, support, indemnity or liability terms You offer.

3.6. Distribution of Executable Versions.

You may distribute Covered Code in Executable form only if the requirements of Section 3.1-3.5 have been met for that Covered Code, and if You include a notice stating that the Source Code version of the Covered Code is available under the terms of this License, including a description of how and where You have fulfilled the obligations of Section 3.2. The notice must be conspicuously included in any notice in an Executable version, related documentation or collateral in which You describe recipients' rights relating to the Covered Code. You may distribute the Executable version of Covered Code under a license of Your choice, which may contain terms different from this License, provided that You are in compliance with the terms of this License and that the license for the Executable version does not attempt to limit or alter the recipient's rights in the Source Code version from the rights set forth in this License. If You distribute the Executable version under a different license You must make it absolutely clear that any terms which differ from this License are offered by You alone, not by the Initial Developer or any Contributor. You hereby agree to indemnify the Initial Developer and every Contributor for any liability incurred by the Initial Developer or such Contributor as a result of any such terms You offer.

3.7. Larger Works.

You may create a Larger Work by combining Covered Code with other code not governed by the terms of this License and distribute the Larger Work as a single product. In such a case, You must make sure the requirements of this License are fulfilled for the Covered Code.

4. Inability to Comply Due to Statute or Regulation.

If it is impossible for You to comply with any of the terms of this License with respect to some or all of the Covered Code due to statute or regulation then You must: (a) comply with the terms of this License to the maximum extent possible; and (b) describe the limitations and the code they affect. Such description must be included in the LEGAL file described in Section 3.4 and must be included with all distributions of the Source Code. Except to the extent prohibited by statute or regulation, such description must be sufficiently detailed for a recipient of ordinary skill to be able to understand it.

5. Application of this License.

This License applies to code to which the Initial Developer has attached the notice in Exhibit A, and to related Covered Code.

6. Versions of the License.

6.1. New Versions.

Netscape Communications Corporation (``Netscape'') may publish revised and/or new versions of the License from time to time. Each version will be given a distinguishing version number.

6.2. Effect of New Versions.

Once Covered Code has been published under a particular version of the License, You may always continue to use it under the terms of that version. You may also choose to use such Covered Code under the terms of any subsequent version of the License published by Netscape. No one other than Netscape has the right to modify the terms applicable to Covered Code created under this License.

6.3. Derivative Works.

If you create or use a modified version of this License (which you may only do in order to apply it to code which is not already Covered Code governed by this License), you must (a) rename Your license so that the phrases ``Mozilla'', ``MOZILLAPL'', ``MOZPL'', ``Netscape'', ``NPL'' or any confusingly similar phrase do not appear anywhere in your license and (b) otherwise make it clear that your version of the license contains terms which differ from the Mozilla Public License and Netscape Public License. (Filling in the name of the Initial Developer, Original Code or Contributor in the notice described in Exhibit A shall not of themselves be deemed to be modifications of this License.)

7. DISCLAIMER OF WARRANTY.

COVERED CODE IS PROVIDED UNDER THIS LICENSE ON AN ``AS IS'' BASIS, WITHOUT WARRANTY OF ANY KIND, EITHER EXPRESSED OR IMPLIED, INCLUDING, WITHOUT LIMITATION, WARRANTIES THAT THE COVERED CODE IS FREE OF DEFECTS, MERCHANTABILITY, FIT FOR A PARTICULAR PURPOSE OR NON-INFRINGEMENT. THE ENTIRE RISK AS TO THE QUALITY AND PERFORMANCE OF THE COVERED CODE IS WITH YOU. SHOULD ANY COVERED CODE PROVE DEFECTIVE IN ANY RESPECT, YOU (NOT THE INITIAL DEVELOPER OR ANY OTHER CONTRIBUTOR) ASSUME THE COST OF ANY NECESSARY SERVICING, REPAIR OR CORRECTION. THIS DISCLAIMER OF WARRANTY CONSTITUTES AN ESSENTIAL PART OF THIS LICENSE. NO USE OF ANY COVERED CODE IS AUTHORIZED HEREUNDER EXCEPT UNDER THIS DISCLAIMER.

8. TERMINATION.

This License and the rights granted hereunder will terminate automatically if You fail to comply with terms herein and fail to cure such breach within 30 days of becoming aware of the breach. All sublicenses to the Covered Code which are properly granted shall survive any termination of this License. Provisions which, by their nature, must remain in effect beyond the termination of this License shall survive.

9. LIMITATION OF LIABILITY.

UNDER NO CIRCUMSTANCES AND UNDER NO LEGAL THEORY, WHETHER TORT (INCLUDING NEGLIGENCE), CONTRACT, OR OTHERWISE, SHALL THE INITIAL DEVELOPER, ANY OTHER CONTRIBUTOR, OR ANY DISTRIBUTOR OF COVERED CODE, OR ANY SUPPLIER OF ANY OF SUCH PARTIES, BE LIABLE TO YOU OR ANY OTHER PERSON FOR ANY INDIRECT, SPECIAL, INCIDENTAL, OR CONSEQUENTIAL DAMAGES OF ANY CHARACTER INCLUDING, WITHOUT LIMITATION, DAMAGES FOR LOSS OF GOODWILL, WORK STOPPAGE, COMPUTER FAILURE OR MALFUNCTION, OR ANY AND ALL OTHER COMMERCIAL DAMAGES OR LOSSES, EVEN IF SUCH PARTY SHALL HAVE BEEN INFORMED OF THE POSSIBILITY OF SUCH DAMAGES. THIS LIMITATION OF LIABILITY SHALL NOT APPLY TO LIABILITY FOR DEATH OR PERSONAL INJURY RESULTING FROM SUCH PARTY'S NEGLIGENCE TO THE EXTENT APPLICABLE LAW

PROHIBITS SUCH LIMITATION. SOME JURISDICTIONS DO NOT ALLOW THE EXCLUSION OR LIMITATION OF INCIDENTAL OR CONSEQUENTIAL DAMAGES, SO THAT EXCLUSION AND LIMITATION MAY NOT APPLY TO YOU.

10. U.S. GOVERNMENT END USERS.

The Covered Code is a ``commercial item,'' as that term is defined in 48 C.F.R. 2.101 (Oct. 1995), consisting of ``commercial computer software'' and ``commercial computer software documentation,'' as such terms are used in 48 C.F.R. 12.212 (Sept. 1995). Consistent with 48 C.F.R. 12.212 and 48 C.F.R. 227.7202-1 through 227.7202-4 (June 1995), all U.S. Government End Users acquire Covered Code with only those rights set forth herein.

11. MISCELLANEOUS.

This License represents the complete agreement concerning subject matter hereof. If any provision of this License is held to be unenforceable, such provision shall be reformed only to the extent necessary to make it enforceable. This License shall be governed by California law provisions (except to the extent applicable law, if any, provides otherwise), excluding its conflict-of-law provisions. With respect to disputes in which at least one party is a citizen of, or an entity chartered or registered to do business in, the United States of America: (a) unless otherwise agreed in writing, all disputes relating to this License (excepting any dispute relating to intellectual property rights) shall be subject to final and binding arbitration, with the losing party paying all costs of arbitration; (b) any arbitration relating to this Agreement shall be held in Santa Clara County, California, under the auspices of JAMS/EndDispute; and (c) any litigation relating to this Agreement shall be subject to the jurisdiction of the Federal Courts of the Northern District of California, with venue lying in Santa Clara County, California, with the losing party responsible for costs, including without limitation, court costs and reasonable attorneys fees and expenses. The application of the United Nations Convention on Contracts for the International Sale of Goods is expressly excluded. Any law or regulation which provides that the language of a contract shall be construed against the drafter shall not apply to this License.

12. RESPONSIBILITY FOR CLAIMS.

Except in cases where another Contributor has failed to comply with Section 3.4, You are responsible for damages arising, directly or indirectly, out of Your utilization of rights under this License, based on the number of copies of Covered Code you made available, the revenues you received from utilizing such rights, and other relevant factors. You agree to work with affected parties to distribute responsibility on an equitable basis.

EXHIBIT A.

``The contents of this file are subject to the Mozilla Public License Version 1.0 (the "License"); you may not use this file except in compliance with the License. You may obtain a copy of the License at <http://www.mozilla.org/MPL/>

Software distributed under the License is distributed on an "AS IS" basis, WITHOUT WARRANTY OF ANY KIND, either express or implied. See the License for the specific language governing rights and limitations under the License.

The Original Code is _____.

```
The Initial Developer of the Original Code is _____.  
Portions created by _____ are Copyright (C) _____.  
_____. All Rights Reserved.  
  
Contributor(s): _____.''
```

B.2.9. AElfred license

```
AElfred, Version 1.2  
  
Microstar's Java-Based XML Parser<br>  
Copyright (c) 1997, 1998 by Microstar Software Ltd.  
Home Page: http://www.microstar.com/XML/  
  
AElfred is free for both commercial and non-commercial use and  
redistribution, provided that Microstar's copyright and disclaimer are  
retained intact. You are free to modify AElfred for your own use and  
to redistribute AElfred with your modifications, provided that the  
modifications are clearly documented.  
  
DISCLAIMER  
  
This program is distributed in the hope that it will be useful, but  
WITHOUT ANY WARRANTY; without even the implied warranty of  
merchantability or fitness for a particular purpose. Please use it AT  
YOUR OWN RISK.
```

B.2.10. Common Public License (CPL), Version 1.0

Reformatted License Text

Since I could not find an official plain text version of the CPL, I copied the text into a text editor and had the paragraphs formatted automatically.

```
Common Public License - v 1.0  
  
THE ACCOMPANYING PROGRAM IS PROVIDED UNDER THE TERMS OF THIS  
COMMON PUBLIC LICENSE ("AGREEMENT"). ANY USE, REPRODUCTION OR  
DISTRIBUTION OF THE PROGRAM CONSTITUTES RECIPIENT'S ACCEPTANCE  
OF THIS AGREEMENT.  
  
1. DEFINITIONS  
  
"Contribution" means:  
  
    a) in the case of the initial Contributor, the initial  
       code and documentation distributed under this Agreement,  
    and b) in the case of each subsequent Contributor:  
  
    i) changes to the Program, and  
  
    ii) additions to the Program;
```

where such changes and/or additions to the Program originate from and are distributed by that particular Contributor. A Contribution 'originates' from a Contributor if it was added to the Program by such Contributor itself or anyone acting on such Contributor's behalf. Contributions do not include additions to the Program which: (i) are separate modules of software distributed in conjunction with the Program under their own license agreement, and (ii) are not derivative works of the Program.

"Contributor" means any person or entity that distributes the Program.

"Licensed Patents " mean patent claims licensable by a Contributor which are necessarily infringed by the use or sale of its Contribution alone or when combined with the Program.

"Program" means the Contributions distributed in accordance with this Agreement.

"Recipient" means anyone who receives the Program under this Agreement, including all Contributors.

2. GRANT OF RIGHTS

a) Subject to the terms of this Agreement, each Contributor hereby grants Recipient a non-exclusive, worldwide, royalty-free copyright license to reproduce, prepare derivative works of, publicly display, publicly perform, distribute and sublicense the Contribution of such Contributor, if any, and such derivative works, in source code and object code form.

b) Subject to the terms of this Agreement, each Contributor hereby grants Recipient a non-exclusive, worldwide, royalty-free patent license under Licensed Patents to make, use, sell, offer to sell, import and otherwise transfer the Contribution of such Contributor, if any, in source code and object code form. This patent license shall apply to the combination of the Contribution and the Program if, at the time the Contribution is added by the Contributor, such addition of the Contribution causes such combination to be covered by the Licensed Patents. The patent license shall not apply to any other combinations which include the Contribution. No hardware per se is licensed hereunder.

c) Recipient understands that although each Contributor grants the licenses to its Contributions set forth herein, no assurances are provided by any Contributor that the Program does not infringe the patent or other intellectual property rights of any other entity. Each Contributor disclaims any liability to Recipient for claims brought by any other entity based on infringement of intellectual property rights or otherwise. As a condition to exercising the rights and licenses granted hereunder, each Recipient hereby assumes sole responsibility to secure any other intellectual property rights needed, if any. For example, if a third party patent license is required to allow Recipient to distribute the Program, it is Recipient's responsibility to acquire that license before distributing the Program.

d) Each Contributor represents that to its knowledge it has sufficient copyright rights in its Contribution, if any, to grant the copyright license set forth in this Agreement.

3. REQUIREMENTS

A Contributor may choose to distribute the Program in object code form under its own license agreement, provided that:

- a) it complies with the terms and conditions of this Agreement; and
- b) its license agreement:
 - i) effectively disclaims on behalf of all Contributors all warranties and conditions, express and implied, including warranties or conditions of title and non-infringement, and implied warranties or conditions of merchantability and fitness for a particular purpose;
 - ii) effectively excludes on behalf of all Contributors all liability for damages, including direct, indirect, special, incidental and consequential damages, such as lost profits;
 - iii) states that any provisions which differ from this Agreement are offered by that Contributor alone and not by any other party; and
 - iv) states that source code for the Program is available from such Contributor, and informs licensees how to obtain it in a reasonable manner on or through a medium customarily used for software exchange.

When the Program is made available in source code form:

- a) it must be made available under this Agreement; and
- b) a copy of this Agreement must be included with each copy of the Program.

Contributors may not remove or alter any copyright notices contained within the Program.

Each Contributor must identify itself as the originator of its Contribution, if any, in a manner that reasonably allows subsequent Recipients to identify the originator of the Contribution.

4. COMMERCIAL DISTRIBUTION

Commercial distributors of software may accept certain responsibilities with respect to end users, business partners and the like. While this license is intended to facilitate the commercial use of the Program, the Contributor who includes the Program in a commercial product offering should do so in a manner which does not create potential liability for other Contributors. Therefore, if a Contributor includes the Program in a commercial product offering, such Contributor ("Commercial Contributor") hereby agrees to defend and indemnify every other Contributor ("Indemnified Contributor") against any losses, damages and costs (collectively "Losses") arising from claims, lawsuits and other legal actions brought by a third party against the Indemnified Contributor to the extent caused by the acts or omissions of such Commercial Contributor in connection with its distribution of the Program in a commercial product offering. The obligations in this section do not apply to any claims or Losses relating to any actual or alleged intellectual

property infringement. In order to qualify, an Indemnified Contributor must: a) promptly notify the Commercial Contributor in writing of such claim, and b) allow the Commercial Contributor to control, and cooperate with the Commercial Contributor in, the defense and any related settlement negotiations. The Indemnified Contributor may participate in any such claim at its own expense.

For example, a Contributor might include the Program in a commercial product offering, Product X. That Contributor is then a Commercial Contributor. If that Commercial Contributor then makes performance claims, or offers warranties related to Product X, those performance claims and warranties are such Commercial Contributor's responsibility alone. Under this section, the Commercial Contributor would have to defend claims against the other Contributors related to those performance claims and warranties, and if a court requires any other Contributor to pay any damages as a result, the Commercial Contributor must pay those damages.

5. NO WARRANTY

EXCEPT AS EXPRESSLY SET FORTH IN THIS AGREEMENT, THE PROGRAM IS PROVIDED ON AN "AS IS" BASIS, WITHOUT WARRANTIES OR CONDITIONS OF ANY KIND, EITHER EXPRESS OR IMPLIED INCLUDING, WITHOUT LIMITATION, ANY WARRANTIES OR CONDITIONS OF TITLE, NON-INFRINGEMENT, MERCHANTABILITY OR FITNESS FOR A PARTICULAR PURPOSE. Each Recipient is solely responsible for determining the appropriateness of using and distributing the Program and assumes all risks associated with its exercise of rights under this Agreement, including but not limited to the risks and costs of program errors, compliance with applicable laws, damage to or loss of data, programs or equipment, and unavailability or interruption of operations.

6. DISCLAIMER OF LIABILITY

EXCEPT AS EXPRESSLY SET FORTH IN THIS AGREEMENT, NEITHER RECIPIENT NOR ANY CONTRIBUTORS SHALL HAVE ANY LIABILITY FOR ANY DIRECT, INDIRECT, INCIDENTAL, SPECIAL, EXEMPLARY, OR CONSEQUENTIAL DAMAGES (INCLUDING WITHOUT LIMITATION LOST PROFITS), HOWEVER CAUSED AND ON ANY THEORY OF LIABILITY, WHETHER IN CONTRACT, STRICT LIABILITY, OR TORT (INCLUDING NEGLIGENCE OR OTHERWISE) ARISING IN ANY WAY OUT OF THE USE OR DISTRIBUTION OF THE PROGRAM OR THE EXERCISE OF ANY RIGHTS GRANTED HEREUNDER, EVEN IF ADVISED OF THE POSSIBILITY OF SUCH DAMAGES.

7. GENERAL

If any provision of this Agreement is invalid or unenforceable under applicable law, it shall not affect the validity or enforceability of the remainder of the terms of this Agreement, and without further action by the parties hereto, such provision shall be reformed to the minimum extent necessary to make such provision valid and enforceable.

If Recipient institutes patent litigation against a Contributor with respect to a patent applicable to software (including a cross-claim or counterclaim in a lawsuit), then any patent licenses granted by that Contributor to such Recipient under this Agreement shall terminate as of the date such litigation is filed. In addition, if Recipient institutes patent litigation against any entity (including a cross-claim or counterclaim in a lawsuit) alleging that the Program itself (excluding

combinations of the Program with other software or hardware) infringes such Recipient's patent(s), then such Recipient's rights granted under Section 2(b) shall terminate as of the date such litigation is filed.

All Recipient's rights under this Agreement shall terminate if it fails to comply with any of the material terms or conditions of this Agreement and does not cure such failure in a reasonable period of time after becoming aware of such noncompliance. If all Recipient's rights under this Agreement terminate, Recipient agrees to cease use and distribution of the Program as soon as reasonably practicable. However, Recipient's obligations under this Agreement and any licenses granted by Recipient relating to the Program shall continue and survive.

Everyone is permitted to copy and distribute copies of this Agreement, but in order to avoid inconsistency the Agreement is copyrighted and may only be modified in the following manner. The Agreement Steward reserves the right to publish new versions (including revisions) of this Agreement from time to time. No one other than the Agreement Steward has the right to modify this Agreement. IBM is the initial Agreement Steward. IBM may assign the responsibility to serve as the Agreement Steward to a suitable separate entity. Each new version of the Agreement will be given a distinguishing version number. The Program (including Contributions) may always be distributed subject to the version of the Agreement under which it was received. In addition, after a new version of the Agreement is published, Contributor may elect to distribute the Program (including its Contributions) under the new version. Except as expressly stated in Sections 2(a) and 2(b) above, Recipient receives no rights or licenses to the intellectual property of any Contributor under this Agreement, whether expressly, by implication, estoppel or otherwise. All rights in the Program not expressly granted under this Agreement are reserved.

This Agreement is governed by the laws of the State of New York and the intellectual property laws of the United States of America. No party to this Agreement will bring a legal action under this Agreement more than one year after the cause of action arose. Each party waives its rights to a jury trial in any resulting litigation.

Index

D

Data
 summarizing, 14

E

Export
 parameters, 17, 17, 17

L

Locale, 17
Log entries
 deleting, 14
 reusing, 14
 summarizing, 14
 viewing, 13
Look & Feel
 parameters, 17, 17

S

Settings
 of JTimeTracker, 17
 of Templates, 15

T

Template
 renaming a, 13
Template settings
 copying, 16
 deleting, 16
 mandatory, 12
 renaming, 16
Templates
 copying, 16
 deleting, 16
 displaying tree view of, 15
 editing, 14
 renaming, 16

The Making Of...

The revision number of this document is \$Revision: 1.51.2.2 \$. Last modifications have been made at \$Date: 2004/09/06 07:21:52 \$ by \$Author: rfkat \$. The XML document source is stored in the CVS repository at location \$Source: /cvsroot/jtimetracker/JTimeTracker/doc/manual/Attic/JTimeTracker.xml,v \$.

The XML sources for this book were rendered to FO via the DocBook XSLT Stylesheets. More information and downloads are available at the DocBook Open Repository (see <http://docbook.sourceforge.net> [<http://docbook.sourceforge.net>]).

The resulting output was rendered to PDF via FOP. More information and downloads are available at the FOP homepage (see <http://xml.apache.org/fop/index.html> [<http://xml.apache.org/fop/index.html>]).

The whole processing was scripted using the Ant build tool. More information and downloads are available at the Ant homepage (see <http://jakarta.apache.org/ant/index.html> [<http://jakarta.apache.org/ant/index.html>]).